

Disaster Preparedness

ABBOTTABAD



Earthquake Reconstruction & Rehabilitation Authority
Government of Pakistan
Provincial Earthquake Reconstruction & Rehabilitation Agency
Government of NWFP



DISTRICT PROFILE

ABBOTTABAD

District Profile - Abbottabad
Earthquake Reconstruction and Rehabilitation Authority
Prime Minister's Secretariat, Islamabad
Website: <http://www.erra.gov.pk>

Published: July 2007

For official use only

Copyright © Earthquake Reconstruction and Rehabilitation Authority and Affiliates

Compiled by: District Reconstruction Unit (DRU) – Abbottabad

Consolidated and Designed by: ERRA Knowledge Management Cell (KMC)

Printed by: Kamran Printers, Blue Area, Islamabad. Tel: +92-51-2872765

P R E F A C E

The Reconstruction and Rehabilitation Programme implementation took off in April 2006. By that time, ERRA had already gained momentum in the planning and strategy development and started devolving responsibilities with due focus on building capacity of its affiliates, SERRA/PERRA and DRUs.

The enormity, complexity and diversity of reconstruction and rehabilitation programme afforded unparalleled experiences that opened new avenues for learning to people within the organization, as well as to stakeholders, development practitioners, planners and managers, academic institutions and international community. One such avenue led to the development of District Profiles of the nine earthquake affected districts.

The impediments faced in collecting accurate data for damage assessment of the earthquake and for planning reconstruction strategies was a sufficient indicator for ERRA to address the deficiency timely and pragmatically to ensure that such a situation would not be repeated in the future.

Therefore, ERRA, together with its affiliates SERRA/PERRA and DRUs, initiated compilation of available district specific data/information on relevant socio-economic and physical indicators in the form of District Profile to serve as a baseline and a reference point for planning and monitoring progress of work.

The first District Profile has been completed in July 2007. It will be updated regularly with information received from the field through MIS reporting mechanism on the progress of each programme sector with necessary analysis.

The document, it is hoped, will become a useful source of information on district's progressive development under the reconstruction and rehabilitation programme.

I avail this opportunity to thank ERRA team and its affiliates for dedicating their time and efforts to prepare the document, and our development partners for their encouragement and support in the process.



Altaf M. Saleem
Chairman

ACKNOWLEDGEMENTS

The Earthquake Reconstruction and Rehabilitation Authority (ERRA) is grateful to the Government of Azad Jammu and Kashmir (AJK) and the Government of the North West Frontier Province (NWFP), State/Provincial Reconstruction and Rehabilitation Agencies (SERRA/PERRA), District Reconstruction Units (DRUs) and line departments for their cooperation and practical assistance in the collection, verification and consolidation of information for the District Profile.

ERRA is also thankful to UN-WFP and NESPAK for jointly providing useful maps for the districts, which are part of the profile.

Contributions and support by various Wings and Cells within ERRA to Knowledge Management Team in the process, is duly acknowledged.

Finally, it was a collective effort by the larger ERRA family that had received tremendous support from its partners in development, the G-7 group of donors. ERRA fully acknowledges their support.



Lt. Gen. Nadeem Ahmed
Deputy Chairman
ERRA



Khadija Khan
Chief
Knowledge Management

CONTENTS

Page

Preface		i
Acknowledgements		ii
Contents		iii
List of Tables and Figures		iv
Acronyms		v
Executive Summary		vii
Chapter 1	Introduction	1
1.1	The Landscape and Physical Features of the Area	1
1.2	Industry, Trade and Commerce	2
1.3	The People	2
1.4	Roads	2
1.5	Telecommunication	2
1.6	Power	2
1.7	Administration	3
1.8	Important Places	3
Chapter 2	Pre Earthquake Socio-Economic and Physical Indicators - Baseline District Census Report– 1998 with Update on Selected Indicators	5
2.1	Overview	5
2.2	Sector-Specific Information	5
Chapter 3	Extent of Damages due to Earthquake and Sector-wise / Year-wise Reconstruction Plan	9
3.1	Housing Sector	9
3.2	Livelihood	10
3.3	Education	13
3.4	Health	14
3.5	Water and Sanitation	16
3.6	Governance (Administrative Infrastructure)	17
3.7	Power (Electricity)	17
3.8	Transport Sector	18
3.9	Telecommunication	19
3.10	Social Protection	19
3.11	Environment	20
3.12	Tourism and Industry	21
Annexes	A. Annual Work Plan; List of Projects/Schemes	25
	B. List of Union Councils	75
	C. Key Responsible Agencies and Contacts in the Abbottabad District	79
	D. Map of Abbottabad District	-

TABLES

Sr. No	Title of Tables	Page No.
1	Area and Population	5
2	Land Use Pattern	6
3	Major Crops	6
4	Live Stock	6
5	Health Facilities	7
6	Educational Institutions	7
7	Damages in Housing Sector	9
8	Damages in Livelihood Sector (NWFP)	10
9	Year-Wise Financial Phasing in Livelihood Sector	12
10	Extent of Damages in Education Sector	13
11	Extent of Damage in Health Sector	14
12	Year- Wise Reconstruction and Repair of Health Outlets	15
13	Year-Wise Reconstruction Plan - Health Sector	15
14	Extent of Damages in Watsan Sector	16
15	Budget Allocated for Reconstruction -WATSAN	16
16	Year-Wise Budget Allocated for Reconstruction in Governance Sector	17
17	Governance (Buildings) Reconstruction Plan	17
18	Extent of Damages in Road Sector	18
19	Year-Wise Reconstruction Plan in Road sector	19
20	Extent of Damages in Forest Sector	20
21	Extent of Damages to Forest Departments and Recnstruction Plan	21
22	Land Slides Caused By Earthquake 2005 in District Abbottabad	21

ACRONYMS

ADB	Asian Development Bank
AWP	Annual Work Plan
BHU	Basic Health Unit
CD	Completely Damaged
CDWP	Central Development Working Party
DFID	Department for International Development
DHQ	District Headquarters
DRAC	District Reconstruction Advisory Committee
D&SC	Donor and Sponsor Cell
EDO	Executive District Officer
ERRA	Earthquake Reconstruction & Rehabilitation Authority
EST	Estimated
FY	Financial Year
GOVT.	Government
GPTI	Government Poly Technical Institute
GTVC (W)	Government Technical Vocational Centre for Women
KM	Kilometer
LHV	Lady Health Visitor
LSDD	Live Stock And Dairy Department
MCH	Maternity Child Health
NADRA	National Database Registration Authority
ND	Negligible Damage
NESPAK	National Engineering Services Pakistan (PVT) Limited
NGO	Non Governmental Organization
NIHD	National Institute for Human Development
NWFP	North West Frontier Province
PC-I	Planning Commission Form
PD	Partially Damaged
PDWP	Provincial Development Working Party
PERRA	Provincial Earthquake Reconstruction & Rehabilitation Agency
PHED	Public Health Engineering Department
PRC	Provincial Reserve Centre
PTA	Parent Teacher Association
RHC	Rural Health Centre
RWSSP	Rural Water Supply & Sanitation Project

S&L	Schools & Literacy
STG	Secondary Transmission and Grid
THQ	Tehsil Headquarters
TMA	Tehsil Municipal Administration
UC	Union Council
UNICEF	United nations Children's Fund
W&S	Works & Services
WATSAN	Water Supply & Sanitation
WB	World Bank
WSS	Water Supply Scheme

EXECUTIVE SUMMARY

District Profile Abbottabad serves as a complete account of state and situation of development reflected in pre and post earthquake socio-economic and physical indicators, earthquake damages and reconstruction plans. The baseline Abbottabad comprises of information given in the Census Report of 1998 and updated information as cited along with source.

The district is divided into two Tehsils Abbottabad and Havelian and fifty-one Union Councils. Area-wise, District Abbottabad is 1967 sq. km, with a population of 881000 and an average annual growth rate of 1.82%. The average household size is calculated as 6,4 persons.

Some 83.12% population lives in rural areas. The sex ratio in rural and urban areas of the District is 94.96 and 128.08 respectively, indicating that male proportion is much higher in urban areas compared to the rural areas. The total literacy rate is 37.26% in which 58.66 is recorded in urban and 32.51% in the rural area. The literacy rate among male and female was 52.82% and 21.14% respectively which is analogous to the number of existing educational institutions i.e. 1086 for boys and 528 for girls. A total of 1031 educational facilities have been affected by the earthquake of October, 2005. The damage assessment made in the Education Sector shows that there must have been a sizable growth in the Education Sector stretched over the last decade.

The total labour force participation rate is 27.92 which is higher in urban areas i.e. 33.38 % as compared to 26.63% in rural areas. There lies a major difference in the participation rates between male and female labour at 55.21% for male compared to 1.25% for female . Un-employment rate is recorded as 31.14%. Regarding access to safe drinking water, 79% of urban population avail the facility of piped water whereas the respective figure for rural population is 23.83%. Some 34.31% households have separate latrines. Regarding community/public health facilities, 108 health outlets are calculated in the district according to Census Report 1998 which have increased to 118 in 2005 as cites in Report of Bureau of Statistics, NWFP, 2005. The additions are in Civil Hospitals and Basic Health Units. A total of 23 Health Outlets got affected in the earthquake.

The earthquake caused loss to human, socioeconomic and environmental capital and affected both the physical and psychological aspects of life. The affected areas in Abbottabad District can be classified into the highly affected nine Union Councils namely Dalola, Boi, Bakote, Pattan Kalan, Namal, Berote, Kukmong, Pluck and Beerangali located across River Jehlum & river Kunhar and Randomly affected areas.

The Earthquake Reconstruction and Rehabilitation Authority (ERRA) in close collaboration with Provincial Reconstruction and Rehabilitation Agency (PERRA), District Reconstruction Unit (DRU), line departments and development partners has launched a comprehensive reconstruction programme consisting of 12 major sectors which will be completed over the period of three years.

Chapter 1

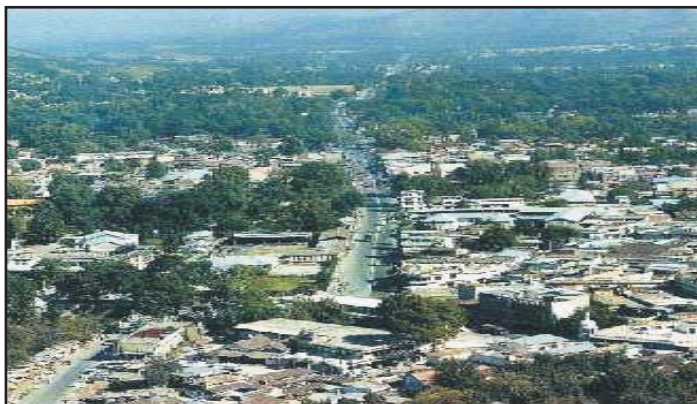
Introduction¹

The quality of information plays a vital role in better development planning. It becomes more important for the areas affected by disaster. After the earthquake of October 2005 in Pakistan the damage assessment in the nine affected districts became a cumbersome exercise due to lack of information at district level and disaggregated data on key socioeconomic aspects. However, Earthquake Rehabilitation and Reconstruction Authority (ERRA) used the Preliminary Damage Assessment done by the Asian Development Bank and the World Bank in collaboration with the Government departments, for planning its huge programme encompassing 12 major sectors. ERRA further complemented it with re-assessment where required e.g. in the Housing Sector.

The above experience necessitated compiling a specific document that could provide district specific information to serve as a baseline to track down progress in the future. Hence, the District Profile document was compiled.

1.1 The Landscape and Physical Features of District Abbottabad

District Abbottabad is located in the North West Frontier Province (NWFP) of Pakistan and is spread over an area of 1,967 sq miles. Abbottabad is bordered by Mansehra District in the North, Muzaffarabad District in the East, Rawalpindi District in the South and the Haripur District in the West.



Predominantly mountainous and rugged, the district's mean maximum and minimum temperatures are 23°C and 11°C respectively and its climate varies with altitude, which ranges from 600 meters to 2,800 meters. During the winter season, snowfall takes place above 900 meters i.e. Abbottabad city, surrounding mountains and area above Changlagali and Barian in

¹ 1998 District Census Report of Abbottabad

the Galliat. Monsoon rains usually start in the month of July lasting till September. This is followed by a dry spell lasting for about two months.

The significant streams of the Abbottabad District are Harro, Dor and Siran. River Kunhar flows along the North Eastern boundary of the District and joins the Jehlum in the East. The Siran River and the Dor River have innumerable tributaries including the permanent flowing (Kathas) and the scant flowing (Kassies).

Abbottabad is the principal city of the District Abbottabad in the NWFP of Pakistan. It is 4120 feet (1256 m) above sea level, and is located (101 km) from Rawalpindi, 217 km from Peshawar and 84 km from Kohala Bridge. Abbottabad, a city of British times was the headquarters of Hazara district (later a Division) and was named after its founder, Major James Abbott who settled this district in 1853 after the annexation of the Punjab, and became its first Deputy Commissioner. It remained an important military cantonment and sanatorium, being the headquarters of a brigade in the second division of the Northern Army Corps.

1.2 Industry, Trade and Commerce

According to census report of 1988 only few elementary level industries exist in District Abbottabad. A small industrial estate lies at Mandian 5 km away from Abbottabad city, where cement, wood work, PVC pipes, wires and cement pipes are prepared. Employment in government offices, Army as well as overseas employment is quite common. District Abbottabad is rich in soap stone, magnasite and phosphate.

1.3 The People

Abbottabad is home to settlers from all across Pakistan, Kashmiris pushed out by Dogra rulers, refugees from Delhi displaced after 1857's upheaval, and the Afghans. A well-established extended family of the Bohra community has also settled in Abbottabad. Besides, it has a sizable Christian community.

1.4 Roads

District Abbottabad because of its hilly and mountainous terrain lacks a first-rate road network. However, the main city and towns are linked with metalled and rail communication that exists only upto Hawalian and is connected with Rawalpindi, (through Taxila). As per statistical report by the Bureau of Statistics Peshawar, total road network as on 2003-04 is 1443.44 km.

1.5 Telecommunication

District Abbottabad is connected with the outer world via modern digital telephone exchange. One radio station established at Jhangi is serving the people of this area. Cellular phone services, with considerable coverage in all major towns are also available. As per statistical report 2005 by the Bureau of Statistics Peshawar, total telephone connections are 32,007.

1.6 Power

Abbottabad is linked with Pakistan's National grid system. The distribution network within the city and rest of the district is the responsibility of PESCO. Most of the villages and towns are quite well serviced in terms of electricity. Census Report Abbottabad 1998 reports 124,733 total electricity connections.

1.7 Administration

Similar to the other districts of the Province, District Nazim is the head of the district administration, who is elected for a period of three years. Most of the departments have been devolved and are headed by the Executive District Officer (EDO) working under the supervision of District Coordination Officer (DCO). Devolved departments include Education, Health, Finance & Planning, Industries, Social Welfare, Agriculture and Works and Services. Un-devolved department like Forestry, Wildlife, Irrigation and Food also have their district set up in Abbottabad.

One circuit branch of Peshawar high court sits in the district while the District and Session Judge, Additional Session Judge and Senior Civil Judge deal with the judicial cases at their own offices. Revenue system is well established under the Revenue Officer. The district is divided into six Kanungo and 78 Patwar Circles. It is divided into two Tehsils/ viz; Havelian (16 UCs) and Abbottabad (35 UCs). The Police Department is headed by the Superintendent Police and is supported by Sub Divisional Police Officers, Station House Officers and a number of police personnel.

1.8 Important Places

Abbottabad is a transit city for the tourists and is a junction from where one can go to places like Hunza, Gilgit, Skardu and Gizar of the Karakoram Range and Swat, Dir and Chitral of the Hindukush Range, and Naran, Saif-ul-Muluk, Shogran, Babusar Pass of the Himalayan Range. Neelum, Lipa and Jhelum Valleys of beautiful Azad Kashmir are also connected through Abbottabad. Tourist attractions include Nathiagali, Dongagali, thandiani, Ayubia, Shimla Hills and Ilyasi Masjid. The Cantonment area of Abbottabad is a reflection of the colonial past. The European bungalows, the club, the church and cemetery are still there. Abbottabad is an hour's drive from Nathia Gali (the summer capital of the North West Frontier Province) and is connected through a 34 km of road dropping steeply through the beautiful valleys with few trees to the river bed.



Chapter 2

Pre-Earthquake Socio-Economic and Physical Indicators Baseline District Census Report 1998 with Updates on Selected Indicators

2.1 Overview

According to the 1998 Census, Abbottabad District had a population of 881,000 with an average annual growth rate of 1.82%. The average household size is 6.4 persons. Some 83.12% population lives in rural areas. The sex ratio in rural and urban areas of the district is reported as 94.96 and 128.08 respectively, indicating that male proportion is much higher in urban areas compared to the rural areas. The disabled persons constitute 1.83% of the total population. The literacy rate among male and female is 52.82% and 21.14% respectively. The total literacy rate is 37.26% in which 58.66 is recorded as among urban and 32.51% in the rural sector. The total labour force participation rate is 27.92 also higher in urban areas i.e. 33.38 % as compared to 26.63% in rural areas. Out of the total population above the age of 18, 73.64% held National I/D cards. The rate is 84.41% for male and 63.44% for female.

According to 1998 Census report; there are 136,000 housing units in district Abbottabad; 114000 (83.82%) in rural areas and 22,000 (16.18%) in urban areas. As far the type of construction, 63.19% rural and 87.24% urban housing units are build with baked bricks, blocks or stones whereas 34.80 rural and 11.75 urban housing units are build with un-backed bricks.

2.2 Sector-Specific Information

The information given in the following tables to establish a pre-earthquake baseline has been taken from **District Census Report on Abbottabad -1998**.

Table 1					
Area and Population					
Social Indicators	Total	Rural	Urban	Male	Female
Population 1998 (in thousand No.s)	881	723	158	441	440
Estimated Population 2004-2005 ⁶ (in thousand No.s)	996	804	192	499	498
Household Size (in No.s 1998)	6.4 Persons				
Annual Growth Rate %	1.82				
Literacy Rate %	37.26	32.51	58.66	52.82	21.14
Enrolment Ratio %	48.18	45.89	58.82	56.02	40.11
Labour Force Participation %	27.92	26.63	33.38	55.21	1.25
Economically Active Population %	19.99	18.78	25.52	39.03	0.91
Disabled Population %	1.83			1.19	0.64
Area in sq. km	1967 (2.64 % of NWFP)				
Source: Census Report of District Abbottabad 1998					

Table 2	
Land Use Pattern	
Utilization Status	Area in Acres
Total area	178,401
Cultivate area	63,372
Net sown area	52,472
Current fallow	10,900
Cropped area	61,396
Area sown more than once	8,924
Un-cultivated area	115,029
Waste area	12,586
Forest area	83,201
Not available for cultivation	19,242

Source: Census Report District Abbottabad 98

Table 3				
Major Crops In Abbottabad District				
S.No.	Name of crops	Area in hectare	Production in M/T on	Per Acre Yield in kg.
1	Wheat	156.38	19,591	1253
2	Maize	35,278	39,372	1116
3	Rice	23	28.7	1248
4	Jawar	39	34	872
5	Bajra	6	3	500
6	Barley	679	605	891

Source: Census Report of District Abbottabad 1998

Table 4		
Live-Stock		
S. No.	Livestock population	Number
1	Cattle	115,805
2	Buffalo	133,463
3	Sheep	32,217
4	Goat	222,472
5	Camel	24
6	Horse	8,661
7	Mule	11,991
8	Donkey	37,378
9	Domestic poultry	622,649

Source: Census Report of District Abbottabad 1998

Table 5		
Health Facilities		
S. No	Health centre	Number
1	Civil hospital. Male & female	6
2	Rural health centres	4
3	Basic health centres	49
4	Civil dispensaries	32
5	Maternity care health centre	1
6	Sub health centre	1
7	District headquarter hospital	1
8	Women & children hospital	1
9	Ayub medical complex	1
10	Cantonment hospital	1
11	T.B. Hospital	1
12	Nawaz Sharif dispensaries	10

Source: Census Report of District Abbottabad 1998



Table 6				
Educational Institutions				
S. No.	Educational institution	Boys	Girls	Co-education
1	Ayub medical college	0	0	1
2	Govt. Post Graduate college	1	0	0
3	Colleges	5	1	0
4	Higher secondary schools	7	3	0
5	High schools	62	24	0
6	Middle schools	68	40	0
7	Primary schools	523	455	0
8	Mosque schools	405	0	0
9	Maktab schools	14	0	0
10	JICA model schools	1	1	0
11	Community model schools	0	4	0

Source: Census Report of District Abbottabad 1998

Statement for prior clarification

The Third Chapter comprises of figures and statistics on Extent of Damages and Reconstruction Plans which have been taken from the Preliminary Damage Assessment Report by ADB/WB, ERRRA's Sectoral Strategy Documents and input from the respective DRU. Moreover, figures of 2nd assessment carried out in Housing Sector have been incorporated. Data regarding power sector has been taken from PESCO. The exercise for specific need-base re-assessments and reconciliation of project level planning is underway. Any new project identified and agreed upon by ERRRA will be incorporated in the strategies in due course of time.

Chapter 3

Extent of Damages due to Earthquake and Sector-Wise/Year-Wise Reconstruction Plan

The earthquake adversely affected Abbottabad District; leaving hundreds of people dead; hundreds injured besides destroying thousands of houses; causing substantial damage to Government buildings and inflicting tremendous loss to the physical infrastructure including roads, bridges, water supply & sanitation and destruction of eco system and agro fields. This enormous loss to human, socio-economic and environmental capital affected both the physical and psychological aspects of life and created a great resource gap. The affected areas in Abbottabad District can be classified into the following two types:

- i. Highly affected areas; these include nine Union Councils namely Dalola, Boi, Bakote, Pattan Kalan, Namal, Berote, Kukmong, Pluck and Beerangali located across River Jehlum and River Kunhar.
- ii. Randomly affected areas of Abbottabad District

3.1 Housing Sector

i. Extent of Damages

Under the initial survey by the District Government, a total 49,745 families were provided with compensation of Rs. 25000/- for immediate shelter. Second phase of survey was done by Pak Army (in 48 Union Councils and Cantonment Area) and PPAF (in 3 Union Councils) for release of second installment to the affected for reconstruction of houses. The surveys indicate the following:-

Table 7					
Extent of Damages in Housing Sector					
Completely Destroyed		Partially Damaged		Negligible Damaged	
ERRA	PPAF	ERRA	PPAF	ERRA	PPAF
13182	7871	15793	3593	19707	1281
Total CD =21053		Total PD=19386		Total ND=20988	
Grand Total CD+PD+ND=61427					
Source: Internal source of ERRA, Housing Sector					

ii. Reconstruction Plan

During the relief phase financial assistance amounting to Rs. 25,000 was given for immediate shelter to all affected whose houses were identified as fully or partially (un-livable) damaged. For progressive disbursement of financial assistance for reconstruction of private housing, partner organizations were selected for damage assessment survey. For 49 union councils and cantonment area of district Abbottabad, the Partner Organization is Pak Army whereas PPAF conducted a door-to-door assessment in union councils Boi, Kukmong and Dalola. For fully collapsed houses an amount of Rs. 175,000 per house is provided in three tranches viz; 25,000 already paid, Rs. 75,000 mobilization, Rs. 25,000 plinth and Rs 50,000 lintel/roof

levels. For retrofitable damaged houses Rs. 75,000 are being paid including 25,000 already paid. To ensure reconstruction of private houses as per approved designs of ERRA, Housing Resource Centers have been established besides selecting partner organizations to impart training to artisans and awareness to beneficiaries.

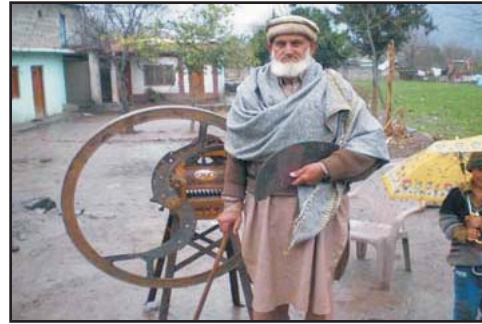
3.2 Livelihood

i. Extent of Damages

According to preliminary survey conducted by ADB and WB in November 2005, total estimated loss in employment or livelihood in NWFP was assessed as 34,278 people which were 25% of the total employed population (above age 10). The highest job losses were in agriculture, trade (small business, shops) and the construction sector. The details are given in the given in the following table:

Extent of Damages in Livelihood Sector(NWFP)				
Sector	Pre earthquake employment	%age	% loss	Employment loss
Agriculture, Forestry	26249	19.14	32	8400
Mining	29	0.02	39	11
Manufacturing	4496	3.28	34	1529
Utility	1877	1.37	32	601
Construction	23704	17.29	32	7585
Trade	19297	14.07	34	6561
Transport etc	13635	9.94	27	3681
Finance and business	1572	1.15	33	519
Services & Public administration	41004	29.91	3	1230
Others	5247	3.83	31	1627
Total	137110	100	25	34278
Source: Preliminary Damage Assessment Report, ADB and WB in November 2005				

For District Abbottabad, the employment patterns by occupational categories are broadly consistent with the sectoral compositions. Paid employment in private and public sector is the largest occupation followed by self employed individuals; largely comprising owner cultivators and shop owners/ small traders and employment in construction, agriculture and forestry sectors. Paid employment in private and public sector dominates employment in urban area whereas agriculture and livestock rearing is the main occupation in rural area which is on the decrease on account of division of agricultural land, low productivity and lack of marketing opportunities, resulting in migration of manpower to urban areas.



Given the profile of livelihood outlined above, the ADB/ WB report indicated the most severe impacts on livelihoods through loss of livestock and other agriculture inputs, including land and losses to private assets suffered by traders and small business. The significant damages to public infrastructure, on the other hand may not have led to direct losses in employment amongst paid employees. The shock to infrastructure as well as institutional capacity of the local government is however, likely to have additional impact on the ability of markets, business and rehabilitation efforts to function effectively.

The above rough estimates of losses may not be accurate for the entire district but these assessments seem to be very correct in the case of highly affected nine Union Councils of District Abbottabad namely Dalola, Boi, Bakote, Pattan Kalan, Namal, Berote, Kukmong, Pluck and Beerangali located across the two rivers Jehlum and Kunhar.

Increased pressure of immigrants on Abbottabad city from rural areas and lack of livelihood opportunities in these areas are the most alarming issues to be addressed through a sustainable livelihood programme for enhancing livelihood opportunities particularly for women in the worst affected union councils of District Abbottabad.

ii. Rehabilitation Plan

a. Livelihood Cash Grants Programme

Under Livelihood Cash Grants Programme, a fixed amount of Rs. 3000 per month is being disbursed to the vulnerable families for six months. This programme targets households who have lost their capacity to earn livelihood, temporarily or permanently. Identification of beneficiaries was based on eligibility criteria and facilitated by community level participation. Under the enrollment and targeting process a total of 38301 vulnerable families were selected in seven worst affected union councils namely: Boi, Dalola, Kukmong, Pattan Kalan, Naml, Birote and Bakote. Due to availability of limited number of cash grants only 12,521 vulnerable families were selected as eligible for the programme. According to latest reports Rs. 205,378 million has been disbursed by May 2007.²

² Internal source of ERRA, Housing Sector

b. Livelihood Core Programme

The significance of relief, rehabilitation and reconstruction after a major catastrophe is an established fact. All these are however, one time activities. On completion, people are bound to revert to their old tradition ridden vocations which by no stretch of imagination are ideal, since they will continue to be caught in “low income equilibrium trap” or the vicious circle of poverty as before *viz*: low productivity, low income, low expenditure and virtually no savings. This circle is destined to continue unless extra efforts are applied to move the communities at higher income level by creating sustainable livelihood means.

Under the guidelines of ERRA, a three years multi sectoral programme of 20 schemes/ projects for the nine worst affected union councils has been formulated by the District Reconstruction Unit Abbottabad to be implemented at a total cost of Rs. 739.042 million.

Table 9					
Year-Wise Financial Phasing in Livelihood Sector					
S.No.	Sector/Sub-Sector	Estd. Cost (m)	Financial Phasing		
			FY-I	FY-II	FY-III
A. Agriculture, Livestock & Dairy Development					
i	Agriculture Extension, Water Management & Skill Developing	139.930	52.239	46.514	41.177
ii	Livestock and Dairy Development	61.630	26.000	32.630	3.000
	Total	201.560	78.239	79.144	44.177
	%age of The Sectoral Total	27.273	38.817	39.266	21.918
B. Forestry, Wildlife & Fisheries Sector					
i	Forestry	145.453	55.477	47.114	42.862
ii	Sericulture/NTFP Sub-Sector	43.941	23.963	15.074	4.904
iii	Wildlife Sub-Sector	307.535	98.667	122.305	86.563
iv	Fisheries	18.000	7.038	5.475	5.487
	Total	514.929	185.145	189.968	139.816
	%age of The Sectoral Total	69.68	35.955	36.892	27.152
C. Industries (Vocational Training)					
i	Establishment of Vocational Training Centers/Income Generating Programme	22.553	6.553	8.000	8.000
	Total	22.553	6.553	8.000	8.000
	%age of The Sectoral Total	3.05	29.056	35.472	35.472
	G-Total	739.042	269.937	277.112	191.993
	Total %	100.00	36.525	37.496	25.979

Source: AWP 2007-8 Abbottabad



The reported damages to buildings in the Livelihood Sector include:

- Office of the EDO Agriculture and 9 Veterinary Institutions
- Damages in residential colony of irrigation department

Schemes for development of model orchards and demo plots, soil conservation, reconstruction of water courses have been covered under Livelihood Programme as the AWP was restricted to the building components and civil work.

3.3. Education

i. Extent of Damages:

Education sector was one of the worst affected sectors in District Abbottabad. A total of 872 government educational institutions were damaged partially or completely by the earthquake as recorded in the preliminary damage report by ADB and World Bank.

Table 10								
Extent of Damages in Education Sector								
Kind of damage	Rural			Urban				Total
	Boys	Girls	Total	Boys	Girls	Private	Total	
Fully damaged	133	76	209	7	3	76	86	295
Partially damaged	332	190	522	18	8	118	214	736
Grand total	1031							
Source: Preliminary Damage and Need Assessment Report by ADB and World Bank Nov.2005								

ii. Reconstruction Plan

Education was hard hit by the catastrophic earthquake of October 2005 in terms of physical infrastructure and human life. The sector was therefore accorded a high priority with a view not only to restore and rebuild but also to “build back better” with an eye on the future with extended facilities in all aspects of education.



The ERRA's strategy for education sector has a provision of Rs. 3.033 billion for reconstruction of schools in District Abbottabad over a period of three years. Reconstruction of 27 schools of the total portfolio was allocated to donors. The AWP for the year 2006-07 was therefore, formulated for 25% of the total government portfolio comprising 196 schools and six colleges.

All the educational institutions started functioning immediately after the earthquake. Tents were provided by the government and relief organizations to ensure continuity of education process. To bring the enrollment back to pre earthquake level, UNICEF launched a project in six worst effected union councils viz; Boi, Dalola, Kukmong, Pattan Kalan, Namal and Bakote. some 271 primary schools were provided school supplies, furniture and winterized tents. Parent Teachers Associations (PTAs) were mobilized and welcome to school campaigns were launched. Due importance is being given to improve the quality of education through software component of 'Teacher's Training. With the assistance of UNICEF, need assessment for teacher training is being work out.

3.4 Health

i Extent of Damages

The damage caused by the earthquake to health infrastructure was severe as it disrupted the health services for the general population. The Health Sector portfolio of earthquake damaged health outlets comprised 25 health institutions as per break up given below:-

Table 11					
Extent of Damages in Health Sector					
District	Union Council	Health facilities			
		Type	Total	Fully damage	Partially damage
Abbottabad	51	BHU	53	8	7
		CD	42	3	2
		RHC	4	0	0
		CH	6	0	3
		THQH	1	0	0
		DHQH	1	0	0
		Teaching	1	0	1
		Others ³	1	1	0
Total affected			25		
Source: ERRA Health Strategy Paper 2006					

³ Other health facilities include first aid posts, MCH Centers, TB Centers etc.



ii. Reconstruction Plan

The ERRA's strategy for Health Sector provides an amount of Rs. 755.000 million for reconstruction of 26 health outlets.

Table 12							
Year -Wise Reconstruction and Repair of Health Outlets							
Year Phase	2006-2007		2007-2008		2008-2009		Total
Refferal Hospital	0	1	0	0	0	0	1
RHC/CH	2	1	0	0	0	0	3
BHU/CD	0	7	8	0	3	2	20
Other Health Facilities	0	0	1	0	0	0	1
Other Health OutLets	1	0	0	0	0	0	1
Total	3	9	9	0	3	2	26

Source: ERRA Health Strategy Paper 2006

Table 13					
Year-Wise Budget for Reconstruction of Health Sector					
Year Phase	2006-07	2007-08	2008-09	2009-10	Total RS 2006-2010 (million)
Reconstruction	60.000	175.000	130.000	15.000	380.000
Repair/upgradation	201.500	163.500	7.000	3.000	375.000
Total	261.500	338.500	137.000	18.000	755.000

Source: ERRA Health Strategy Paper 2006

3.5 Water and Sanitation

i. Extent of Damages

A total of 280 WATSAN Schemes have been damaged by the earthquake in the district.

Table 14	
Extent of Damages in Watsan Sector	
Kind of Schemes	No. of Schemes
Gravity Based WSS	137
Tube Well Based WSS	38
Hand Pumps WSS	105
Total W&S Schemes	280
Source: ERRA WATSAN Strategy Paper 2006	

ii. Reconstruction Plan

UNICEF has pledged for rehabilitation of 25 rural water supply schemes (18 of PHED and 7 of TMA Abbottabad) whereas the DFID assisted RWSSP has been allocated 66 schemes (63 WSS and 3 Sanitation) of TMA Abbottabad. The remaining 104 schemes are included in the AWP 2006-07 to be carried forward to the AWP 2007-08 as ongoing schemes if not completed in the financial year 2006-07.

Table 15		
Watsan Budget Allocation for Reconstruction		
Owned Agency	No. of schemes	Budget (million)
No of PHED owned Schemes	92	171.1
No of TMA owned Schemes	188	174.93
Total Schemes	290	346.03
Source: ERRA WATSAN Strategy Paper 2006		

3.6 Governance (Administrative Infrastructure)

i. Extent of Damages

A total of 145 buildings are reported in ERRA Governance Strategy 2006 as damaged by earthquake with an estimated reconstruction cost of Rs. 477.6624 million.

Table 16				
Year - Wise Budget Allocation to Governance Sector				
Buildings to be Reconstructed	Buildings to be Repaired	Year Wise Budget Allocation (million)		
		2006-07	2007-08	2008-9
63	82	157.6285	238.8312	81.20261

Source: ERRA Strategy Paper Governance 2006

ii. Reconstruction Plan

As covered in the ERRA strategy for Government Buildings, reconstruction of damaged buildings of district administration, Judiciary, Police, Food and official residences have been included under Governance Sector of the AWP 2006-07. Rehabilitation of damage building of Forestry and Agriculture has been covered under the Environment and Livelihood Strategies of ERRA.

Table 17					
Governance (Buildings) Reconstruction Plan - Abbottabad					
Buildings to be Reconstructed	Buildings to be repaired	Area in sq. ft.	Reconstruction & Repair cost	Consultancy/equipment cost(20% of the cost)	Total cost in million
63	82	213640	398.052	79.6104	477.6624

Source: ERRA Strategy Paper Governance 2006

3.7 Power (Electricity)

The World Bank/ ADB report on damage assessment indicates extensive damage to Distribution system and STG network in five districts of NWFP but district wise break up is not available. At district level, the PESCO was consulted at the time of preparation of AWP 2006-07. An amount of 97.734 million has been allocated as reconstruction and rehabilitation of power system in District Abbottabad.

(Source: PESCO)



3.8 Transport Sector

i. Extent of Damages

The ERRA Strategy for Transport Sector indicates a total of 264 roads and 23 bridges/culverts damaged by earthquake in District Abbottabad, as per break up given below:-

Table 18									
Extent of Damages in Road Sector									
District roads damaged length in km			Tehsil roads damaged length in km			Number of structures		Budget estimates	
Shingled	Black top	Total	Shingled/katcha	Black top	Total	Bridges	Culverts	Agency	Cost in million
484	236	720	229.5	109.25	338.75	13	44	W&S	2761.77
								TMA	507.3

Source: ERRA transport strategy paper 2006.



ii. Reconstruction Plan

The Asian Development Bank has committed for financing 50 roads with a tentative cost of Rs. 1033 million. All these were included in the AWP 2006-07. Sixteen Roads are planned to be financed of German Debt Swap and are included in the proposed AWP for the year 2007-08 at a cost of Rs. 400.000 million. Year wise phasing of the reconstruction of road sector is given below:-

Table 19			
Year-Wise Reconstruction Plan in Road sector			
No of Schemes	Year-I 2006-07	Year 2 2007-08	Year 3 208-09
287	91	120	76
Source: AWP 2007-8 Abbottabad			

With the assistance of Asian Development Bank a unit in the W&S Department has been established in each district to deal with reconstruction of earthquake damages. Tendering of Category-I roads is the responsibility of this cell coupled with the reconstruction and rehabilitation of the roads to their original specification. For category 2 roads involving up gradation and realignment, consultants would be hired.

3.9 Telecommunication

No damages in District Abbottabad under this sector were reported.

3.10 Social Protection

i. Extent of Damages

The District wise disaggregated data is not available in this sector. Social protection focuses on the poorest and most vulnerable groups in a society and aims to increase income, resources and opportunity to these groups. Though all earthquake affected people are vulnerable, the Social Protection Strategy focuses specifically on the groups which are at greater risk; and includes pre and post-earthquake cases. These include children both unaccompanied and orphaned, women (Including widows and female-headed households), disabled, elderly (Above 60 years. without adult caretaker/support) and landless due to earthquake.



ii. Reconstruction Plan

To facilitate the vulnerable groups in earthquake affected areas, ERRA has devised a strategy for Social Protection Sector and for its implementation, Social Protection Cells have been established in all the affected districts accordingly. Following are the proposed interventions for the vulnerable groups:-

Orphans

- Community-based care options and Institutional arrangements like SOS Villages
- Cash grant
- Establishment of child friendly spaces by NGOs
- Monitoring through district level Child Protection Committee

Widows

- Housing reconstruction (exception to “owner driven strategy”), (widow/orphan homes)
- Cash grant (Rs 3,000 per month)
- Craft Development, Micro-credit and interest-free loan schemes, Job employment,
- Free access to health care/medicines with NADRA issued special ID cards
- Establishment of women friendly spaces by NGOs

Disabled

- Institutional Strengthening (NIHD and 6 DHQ’s and THQ’s in the affected districts)
- Establishment of Rehabilitation Center at Abbottabad
- Community based Rehabilitation (Community level, District level, Central level)
- Elderly
- Develop linkage with Bait-ul Mal system for support
- Free access to health care/medicines with NADRA issued special ID cards
- Landless

Key actors working for implementation of the social protection in district Abbottabad are Govt. Line Departments, Social Welfare Dept., Zakat Office, Bait-ul mal Office, District office Budget and Finance/ component Manager Livelihood Cash Grant, 479 Brig Battalion, UNICEF, Omer Asghar Khan Development Foundation, CARITAS, YAHR, and Sawera.

3.11 Environment

i. Extent of Damages

The ERRA’s Strategy for Environment sector indicates damages to the buildings of Forest and Wildlife departments.

Table 20		
Extent of Damages in Forest Sector		
Type of Area	Area in Acres	Damaged area in acres
Government forest area	135,574	1528
Source: ERRA Environment Strategy Paper 2006.		

ii. Reconstruction Plan

Provision was therefore made in the AWP for reconstruction and repair to the earthquake damaged buildings of Forest and Wildlife Department. PC-Is have accordingly been approved by DRAC. Other projects under green sector projects of the Environmental Strategy of ERRA have been integrated into the Livelihood Programme. Community based interventions like social forestry; watershed management and land stabilization under the Livelihood programme are the main projects to be implemented through Forest Department.

Environmental checklist for all developmental and reconstruction activities has been designed by ERRA to know environmental aspects and ensure mitigatory measures if required. The environmental checklist is a part of the PC-Is of all sectors to be submitted to ERRA for funding.

Extend of Damages to Forest Department and Reconstruction Plan					
Name of forest entity / division	No. of main office buildings	No. of field office buildings	Residential buildings	Other buildings	Reconstruction cost in million
Galies forest division	8	3	13	0	32.368
Daur watershed division	4	0	7	4	4.394
Sarhad forest school	2	1	4	5	9.120
Total cost					45.882

Source: ERRA Environment Strategy Paper 2006.

Landslides Caused By Earthquake		
No. of landslides	Total area under landslides sq. km.	District area under land slide %
16	0.235	0.01

Source: SUPARCO-Pakistan Earthquake October 2005 Draft Damage Assessment and Analyst Region

3.12 Tourism and Industry

With little industrial base and that too in private sector, the Programme is confined to the reconstruction and repairs of 5 damaged polytechnic institutes at a cost of Rs. 77.080 million, amongst these, one was GTVC(W) Abbottabad which was destroyed and the rest were partially damaged as reported by the department. For Reconstruction and Rehabilitation of Polytechnic and Commerce Institutes, fund mobilization is underway by the D&SC of ERRA. For eco-tourism and establishment of vocational centers to promote and exploit the local traditional skills in embroidery, two schemes have been included under the Livelihood Programme.

ANNEXES

- A. ANNUAL WORK PLAN**
- B. LIST OF UNION COUNCILS**
- C. KEY RESPONSIBLE AGENCIES AND CONTACTS IN THE DISTRICT**
- D. MAP OF ABBOTTABAD DISTRICT**

Annex A

Annual Work Plan 2007-08

Sector: Education
 District Reconstruction Unit: Abbottabad
 Reconstruction Agency : W&S (PERRA)

S.No	Name of Project & Location	Union Council	Approval Date	Estimated Cost			Estimated Expenditure up to June, 2007	Allocation 2007-08
				Capital	Revenue	Total		
A. On Going Projects								
Package 1 of education								
61566	GGPS Bakot	Bakote	7/8/2006	2.803	0.153	2.956	0.841	2.115
61568	GGPS Sangal	Bakote	7/8/2006	2.112	0.153	2.265	0.634	1.631
61713	GGMS Ali Abad	Bakote	7/8/2006	3.763	0.480	4.243	1.129	3.114
61623	GPS Sangal	Bakote	7/8/2006	2.112	0.000	2.112	0.634	1.478
61719	GMS Ali Abad	Bakote	7/8/2006	3.763	0.675	4.438	1.129	3.309
61618	GPS Leeran Sydan	Bakote	7/8/2006	2.112	0.164	2.276	0.634	1.642
61616	GPS Ali Abad	Bakote	7/8/2006	2.112	0.177	2.289	0.634	1.655
61569	GGPS Sari Khan Kalan	Bakote	7/8/2006	2.803	0.164	2.967	0.841	2.126
61620	GPS Saranda	Bakote	7/8/2006	2.112	0.164	2.276	0.634	1.642
	Total			23.692	2.130	25.822	7.108	18.714
Package 2 of education								
61751	GHSS Dalola Proper	Dolala	7/8/2006	29.150	1.600	30.750	7.768	22.982
61645	GPS Dalola	Dolala	7/8/2006	4.240	0.177	4.417	1.130	3.287
61650	GPS Chah	Dolala	7/8/2006	2.670	0.000	2.670	0.712	1.958
62251	GGPS Nara Dalola	Dolala	7/8/2006	2.670	0.153	2.823	0.712	2.111
62253	GPS Palarwai	Dolala	7/8/2006	2.670	0.153	2.823	0.712	2.111
62252	GPS Naroka	Dolala	7/8/2006	2.670	0.000	2.670	0.712	1.958
61587	GGPS Naroka	Dolala	7/8/2006	3.450	0.164	3.614	0.919	2.695
61714	GGMS Naroka	Dolala	7/8/2006	4.640	0.675	5.315	1.237	4.078
	Total			52.160	2.922	55.082	13.900	41.182
Package 3 of Education								
61746	GHS No.2.Abbottabad	Atd City	7/8/2006	12.450	0.000	12.450		6.225
61748	GGHS No.1.Abbottabad	Atd City	7/8/2006	12.450	0.000	12.450		6.225
61730	GHS No.1.Abbottabad	A.Abad	7/8/2006	12.450	1.250	13.700		6.850
61728	GGHS No 2. Abbottabad	A/Abad Urban	7/8/2006	6.770	1.250	8.020		4.274
61729	GGCHSS Abbottabad	A/Abad Urban	7/8/2006	19.220	2.520	21.740		10.870

Sector: Education
 District Reconstruction Unit: Abbottabad
 Reconstruction Agency: W&S (PERRA)

S.No	Name of Project & Location	Union Council	Approval Date	Estimated Cost			Estimated Expenditure up to June, 2007	Allocation 2007-08
				Capital	Revenue	Total		
	Total			63.340	5.020	68.360	0.000	34.444
	Package 4 of Education					0.000		
61715	GGMS Darwaza M-I	Pluck	7/8/2006	4.394	0.530	4.924	1.382	3.542
61701	GGPS Moolia	Bakote	7/8/2006	1.800	0.000	1.800	0.566	1.234
61567	GGPS Bhan P-II	Bakote	7/8/2006	3.309	0.203	3.512	1.041	2.471
61617	GPS Dakhan Moolia P-V	Bakote	7/8/2006	9.374	0.240	9.614	2.948	6.666
61619	GPS Marri P-III	Bakote	7/8/2006	4.057	0.214	4.271	1.276	2.995
61621	GPS Dakhan Khan Kalan P-IV	Bakote	7/8/2006	6.436	0.227	6.663	2.024	4.639
61622	GPS Lundi Mundri P-III	Bakote	7/8/2006	4.057	0.214	4.271	1.276	2.995
61733	GHS Bakote H-II	Bakote	7/8/2006	26.982	1.300	28.282	8.486	19.796
61735	GHS Moolia H-II	Bakote	7/8/2006	26.982	1.300	28.282	8.486	19.796
	Sub Total			87.391	4.228	91.619	27.486	64.133
	Package 5 of Education					0.000		
61625	GPS Lamian Larran P-II	Berote	23/11/2006	3.309	0.210	3.519	1.045	2.474
61627	GPS Dehra P-III	Berote	23/11/2006	4.057	0.221	4.278	1.281	2.997
61624	GPS Bassian P-III	Berote	23/11/2006	4.057	0.221	4.278	1.281	2.997
61626	GPS Bandi Syden P-I	Berote	23/11/2006	2.560	0.156	2.716	0.809	1.908
61571	GGPS Sangrany P-II	Berote	23/11/2006	3.309	0.210	3.519	1.045	2.474
61570	GGPS Lahoar Kuss P-I	Berote	23/11/2006	2.560	0.156	2.716	0.809	1.908
61573	GGPS Julaijal P-III	Berote	23/11/2006	4.057	0.221	4.278	1.281	2.997
61572	GGPS Hill Berote P-I	Berote	23/11/2006	2.560	0.000	2.560	0.809	1.751
	Sub Total			26.469	1.396	27.865	8.360	19.505
	Package 6 of Education							
61597	GGPS Bandian P-I	Namal	23/11/2006	2.560	0.166	2.726	0.794	1.931
61598	GGPS Garri P-I	Namal	23/11/2006	2.560	0.000	2.560	0.794	1.766
61599	GGPS Lower Kurli P-I	Namal	23/11/2006	2.560	0.166	2.726	0.794	1.931
61600	GGPS Tarrach P-I	Namal	23/11/2006	2.560	0.166	2.726	0.794	1.931
61677	GPS Namal P-II	Namal	23/11/2006	3.309	0.000	3.309	1.027	2.282
61743	GHS Namal H-II	Namal	23/11/2006	26.982	1.317	28.299	8.371	19.928

Sector: Education
 District Reconstruction Unit: Abbottabad
 Reconstruction Agency : W&S (PERRA)

S.No	Name of Project & Location	Union Council	Approval Date	Estimated Cost			Estimated Expenditure up to June, 2007	Allocation 2007-08
				Capital	Revenue	Total		
61601	GGPS Uper Kurli P-III	Namal	23/11/2006	4.057	0.231	4.288	1.259	3.029
61676	GPS Chaleesian P-II	Namal	23/11/2006	3.309	0.000	3.309	1.027	2.282
61678	GPS Nara P-I	Namal	23/11/2006	2.560	0.000	2.560	0.794	1.766
61679	GPS Tarrach P-II	Namal	23/11/2006	3.309	0.000	3.309	1.027	2.282
61680	GPS Majuhan P-IV	Namal	23/11/2006	6.436	0.000	6.436	1.997	4.439
61744	GHS Majuhan H-I	Namal	23/11/2006	20.716	0.717	21.433	6.427	15.006
	Sub Total			80.918	2.761	83.679	25.104	58.575
	Package 7 of Education							
61604	GGPS Bugla P-II	Pattian Kalan	23/11/2006	3.309	0.182	3.491		1.745
61605	GGPS Banota P-I	Pattian Kalan	23/11/2006	2.560	0.128	2.688		1.344
61606	GGPS Basian Barwala P-II	Pattian Kalan	23/11/2006	3.309	0.182	3.491		1.745
61607	GGPS Kukhriala P-I	Pattian Kalan	23/11/2006	2.560	0.128	2.688		1.344
61608	GGPS Lari Banota P-I	Pattian Kalan	23/11/2006	2.560	0.128	2.688		1.344
61609	GGPS Pattian Kalan P-II	Pattian Kalan	23/11/2006	3.309	0.182	3.491		1.745
61610	GGPS Tarla Khaither P-II	Pattian Kalan	23/11/2006	3.309	0.182	3.491		1.745
61611	GGPS Chamiali P-I	Pattian Kalan	23/11/2006	2.560	0.128	2.688		1.344
61716	GGMS Bandi Chamiali M-I	Pattian Kalan	23/11/2006	4.394	0.509	4.903		2.451
61684	GPS Pattian Kalan P-IV	Pattian Kalan	23/11/2006	6.436	0.000	6.436		3.218
61685	GPS Drair P-II	Pattian Kalan	23/11/2006	3.309	0.182	3.491		1.745
61686	GPS Kukhriala P-II	Pattian Kalan	23/11/2006	3.309	0.182	3.491		1.745
61687	GPS Mascena Kalan P-IV	Pattian Kalan	23/11/2006	6.436	0.206	6.642		3.321
61688	GPS Tarla Khaither P-I	Pattian Kalan	23/11/2006	2.560	0.128	2.688		1.344
61689	GPS Dawatta P-I	Pattian Kalan	23/11/2006	2.560	0.000	2.560		1.280
61612	GGPS P.K Khan P-III	Pind Kargo Khan	23/11/2006	4.057	0.193	4.250		2.125
61727	GMS Pattian Kalan	Pattian Kalan	23/11/2006	3.500	0.000	3.500		1.750
	Sub Total			60.037	2.634	62.671	0.000	31.336
	Package 8 of Education							
61574	GGPS Boi P-I	Boi	23/11/2006	2.560	0.139	2.699		1.350

Sector: Education
 District Reconstruction Unit: Abbottabad
 Reconstruction Agency: W&S (PERRA)

S.No	Name of Project & Location	Union Council	Approval Date	Estimated Cost			Estimated Expenditure up to June, 2007	Allocation 2007-08
				Capital	Revenue	Total		
61575	GGPS Nakka P-I	Boi	23/11/2006	2.560	0.139	2.699		1.350
61576	GGPS Barbeen P-I	Boi	23/11/2006	2.560	0.139	2.699		1.350
61577	GGPS Mohri P-I	Boi	23/11/2006	2.560	0.139	2.699		1.350
61578	GGPS Tori Sharif P-I	Boi	23/11/2006	2.560	0.139	2.699		1.350
61634	GPS Tori Shareef P-I	Boi	23/11/2006	2.560	0.139	2.699		1.350
61635	GPS Batangi P-I	Boi	23/11/2006	2.560	0.139	2.699		1.350
61579	GGPS Sarhan P-I	Boi	23/11/2006	2.560	0.139	2.699		1.350
61580	GGPS Makreela P-I	Boi	23/11/2006	2.560	0.139	2.699		1.350
61631	GPS Dhani P-III	Boi	23/11/2006	4.057	0.000	4.057		2.029
61632	GPS Nakka P-II	Boi	23/11/2006	3.309	0.000	3.309		1.655
61633	GPS Mohri P-I	Boi	23/11/2006	2.560	0.139	2.699		1.350
	Sub Total			32.969	1.390	34.359	0.000	17.179
	Package 9 of Education					0.000		
61629	GPS Boi P-I	Boi	23/11/2006	2.560	0.132	2.693		1.346
61636	GPS Bandi Samad P-II	Boi	23/11/2006	3.309	0.186	3.495		1.748
61638	GPS Bogran P-I	Boi	23/11/2006	2.560	0.132	2.692		1.346
61639	GPS Bandi Pahar P-I	Boi	23/11/2006	2.560	0.132	2.692		1.346
61640	GPS Sarhan P-II	Boi	23/11/2006	3.309	0.186	3.495		1.748
61637	GPS Chack P-I	Boi	23/11/2006	2.560	0.132	2.693		1.346
61641	GPS Rankote P-III	Boi	23/11/2006	4.057	0.197	4.254		2.127
61718	GMS Rankote M-I	Boi	23/11/2006	4.394	0.513	4.907		2.454
61717	GMS Tori Shareef M-I	Boi	23/11/2006	4.394	0.513	4.907		2.454
61630	GPS Gali Meeran P-I	Boi	23/11/2006	2.560	0.132	2.693		1.346
61732	GHS Sarhan H-I	Boi	23/11/2006	20.716	0.683	21.399		10.700
61750	GHSS Boi HS-I	Boi	23/11/2006	27.731	1.633	29.364		14.682
	Sub Total			80.711	4.575	85.286	0.000	42.643

Sector: Education
 District Reconstruction Unit: Abbottabad
 Reconstruction Agency: W&S (PERRA)

S.No	Name of Project & Location	Union Council	Approval Date	Estimated Cost			Estimated Expenditure up to June, 2007	Allocation 2007-08
				Capital	Revenue	Total		
	Package 10 of Education							
61584	GGPS Dalola No.1 P-II	Dalola	23/11/2006	3.309	0.178	0.000		1.744
61585	GGPS Dalola No.2 P-II	Dalola	23/11/2006	3.309	0.178	3.487		1.744
61586	GGPS Hadora Bandi P-I	Dalola	23/11/2006	2.560	0.124	2.684		1.342
61588	GGPS Grung P-I	Dalola	23/11/2006	2.560	0.124	2.684		1.342
61589	GGPS Darra P-I	Dalola	23/11/2006	2.560	0.124	2.684		1.342
61590	GGPS Hadora Khas P-II	Dalola	23/11/2006	3.309	0.178	3.487		1.744
61643	GPS Chengli P-I	Dalola	23/11/2006	2.560	0.124	2.684		1.342
61644	GPS Daban P-III	Dalola	23/11/2006	4.057	0.189	4.246		2.123
61646	GPS Tarkote P-III	Dalola	23/11/2006	4.057	0.189	4.246		2.123
61647	GPS Plahir Bandi P-I	Dalola	23/11/2006	2.560	0.124	2.684		1.342
61648	GPS Seri Dalola P-II	Dalola	23/11/2006	3.309	0.178	3.487		1.744
61649	GPS Deedal P-IV	Dalola	23/11/2006	6.436	0.000	6.436		3.218
61651	GPS Sehali P-IV	Dalola	23/11/2006	6.436	0.202	6.638		3.319
61652	GPS Darra P-III	Dalola	23/11/2006	4.057	0.189	4.246		2.123
61653	GPS Sirla P-IV	Dalola	23/11/2006	6.436	0.202	6.638		3.319
61654	GPS Hadora P-III	Dalola	23/11/2006	4.057	0.189	4.246		2.123
61731	GHS Hadora Bandi H-I	Dalola	23/11/2006	20.716	0.675	21.391		10.696
	Sub Total			82.288	3.167	85.455	0.000	42.728
	Package 11 of Education							
61592	GGPS Kunthali P-I	Kukmung	23/11/2006	2.560	0.132	2.693		1.346
61593	GGPS Kukmar P-I	Kukmung	23/11/2006	2.560	0.132	2.693		1.346
61657	GPS Plair P-II	Kukmung	23/11/2006	3.309	0.186	3.495		1.748
61658	GPS Kunthali P-I	Kukmung	23/11/2006	2.560	0.000	2.560		1.280
61659	GPS Gundiata P-I	Kukmung	23/11/2006	2.560	0.000	2.560		1.280
61660	GPS Sanja P-I	Kukmung	23/11/2006	2.560	0.000	2.560		1.280
61661	GPS Develi Bandi P-I	Kukmung	23/11/2006	2.560	0.132	2.692		1.346
61662	GPS Naryat P-III	Kukmung	23/11/2006	4.057	0.197	4.254		2.127
61663	GPS Kukmar P-II	Kukmung	23/11/2006	3.309	0.186	3.495		1.748

Sector: Education
 District Reconstruction Unit: Abbottabad
 Reconstruction Agency : W&S (PERRA)

S.No	Name of Project & Location	Union Council	Approval Date	Estimated Cost			Estimated Expenditure up to June, 2007	Allocation 2007-08
				Capital	Revenue	Total		
61664	GPS Jandar Dhaki P-I	Kukmung	23/11/2006	2.560	0.132	2.692		1.346
61665	GPS Marais P-I	Kukmung	23/11/2006	2.560	0.132	2.692		1.346
61666	GPS Kunthali Lower P-I	Kukmung	23/11/2006	2.560	0.132	2.692		1.346
61667	GPS Dogrian P-I	Kukmung	23/11/2006	2.560	0.000	2.560		1.280
61741	GHS Kunthali H-II	Kukmung	23/11/2006	26.982	1.283	28.265		14.133
61668	GPS Pather Gali P-I	Kukmung	23/11/2006	2.560	0.132	2.692		1.346
62332	GGPS Kukmong P-I	Kukmung	23/11/2006	2.560	0.132	2.692		1.346
	Sub Total			68.377	2.912	71.289	0.000	35.645
	Package 12 of Education							
61581	GGPS Sari Bagnotar P-I	Bagnotar	23/11/2006	2.560	0.232	2.792		1.396
61614	GPS Chehan P-III	Bagnotar	23/11/2006	4.057	0.000	4.057		2.029
61615	GPS Gulaga P-I	Bagnotar	23/11/2006	2.560	0.000	2.560		1.280
61596	GGPS Noor Mung P-II	Namli Mara	23/11/2006	3.309	0.286	3.595		1.798
61742	GHS Namli Mara H-II	Namli Mara	23/11/2006	26.982	1.383	28.365		14.183
	Sub Total			39.468	1.902	41.370	0.000	20.685
	Package 13 of Education							
61591	GGPS Bumliial P-I	Kakul	23/11/2006	2.560	0.000	2.560		1.280
61669	GPS Bumliial P-I	Kakul	23/11/2006	2.560	0.299	2.859		1.430
61700	GGPS Bandi Dhundan	B.P.Khan	23/11/2006	1.600	0.000	1.600		0.800
61707	GGCMS Mirpur	Mirpur	23/11/2006	1.550	0.000	1.550		0.775
61711	GPS Mian De Sari	Mirpur	23/11/2006	1.600	0.000	1.600		0.800
61595	GGPS Maira Muzafar P-II	Mirpur	23/11/2006	3.309	0.353	3.662		1.831
61704	GGPS Dhamtour	Dhamtour	23/11/2006	2.350	0.000	2.350		1.175
61708	GGPS Sheikhal Bandi	Sheikhal Bandi	23/11/2006	1.450	0.000	1.450		0.725
61747	GHS Jhangi	Jhangi	23/11/2006	5.560	0.000	5.560		2.780
61705	GGPS Jhangi	Jhangi	23/11/2006	1.200	0.000	1.200		0.600
61749	GGHS Nawanshehr	Nawanshehr	23/11/2006	2.250	0.000	2.250		1.125
	Sub Total			25.989	0.652	26.641	0.000	13.321

Sector: Education
District Reconstruction Unit: Abbottabad
Reconstruction Agency : W&S (PERRA)

S.No	Name of Project & Location	Union Council	Approval Date	Estimated Cost			Estimated Expenditure up to June, 2007	Allocation 2007-08
				Capital	Revenue	Total		
	Package 14 of Education							
61655	GPS Karaga P-III	Goreeni	23/11/2006	4.057	0.221	4.278		2.139
61753	GHSS Lora HS-I	Lora	23/11/2006	27.731	1.657	29.388		14.694
61656	GPS Kutli P-II	Goreeni	23/11/2006	3.309	0.210	3.519		1.760
61720	GMS Goreeni M-II	Goreeni	23/11/2006	7.446	0.732	8.178		4.089
61670	GPS Sari P-I	Lora	23/11/2006	2.560	0.156	2.716		1.358
61671	GPS Lora P-IV	Lora	23/11/2006	6.436	0.234	6.670		3.335
61672	GPS Garhi P-II	Lora	23/11/2006	3.309	0.210	3.519		1.760
	Sub Total			54.848	3.421	58.269	0.000	29.135
	Package 15 of education							
61691	GPS Rahi P-III	Phallah	23/11/2006	4.057	0.195	4.252		2.000
61692	GPS Gumber No. 1 P-II	Phallah	23/11/2006	3.309	0.184	3.493		1.749
61693	GPS Dheri Rakhala P-IV	Phallah	23/11/2006	6.436	0.208	6.644		2.000
61694	GPS Kund Battel P-II	Phallah	23/11/2006	3.309	0.184	3.493		1.300
61613	GGPS Nalla Seer P-I	Seer	23/11/2006	2.560	0.130	2.690		1.345
61695	GPS Battian P-I	Seer	23/11/2006	2.560	0.130	2.690		1.345
61696	GPS But Nara P-IV	Seer	23/11/2006	6.436	0.208	6.644		2.000
61722	GMS Battian M-I	Seer	23/11/2006	4.394	0.511	4.905		2.000
61682	GPS Malmola P-II	Nagri Tutial	23/11/2006	3.309	0.184	3.493		1.300
61603	GGPS Malmola P-II	Nagri Tutial	23/11/2006	3.309	0.184	3.493		1.300
61681	GPS Nagri Tutial P-IV	Nagri Tutial	23/11/2006	6.436	0.208	6.644		2.000
61673	GPS Baseera P-I	Langrial	23/11/2006	2.560	0.130	2.690		1.345
61752	GHSS Langrial HS-I	Langrial	23/11/2006	27.731	1.631	29.362	8.8	20.562
	Sub Total			76.406	4.084	80.490	8.800	40.245
	Package 16 of Education							
61697	GPS Aziz Bang P-I	Sarbana	23/11/2006	2.560	0.156	2.716		1.358
61698	GPS Maira Aziz Bang P-I	Sarbana	23/11/2006	2.560	0.156	2.716		1.358
61699	GPS Aziz Abad P-I	Sarbana	23/11/2006	2.560	0.156	2.716		1.358
61690	GPS Upper Malsa P-I	Phalkot	23/11/2006	2.560	0.156	2.716		1.358

Sector: Education
 District Reconstruction Unit: Abbottabad
 Reconstruction Agency : W&S (PERRA)

S.No	Name of Project & Location	Union Council	Approval Date	Estimated Cost			Estimated Expenditure up to June, 2007	Allocation 2007-08
				Capital	Revenue	Total		
61583	GGPS Lower Berin Gali P-IV	Berin Gali	23/11/2006	6.436	0.234	6.670		3.335
61734	GHS Berin Gali H-II	Berin Gali	23/11/2006	26.982	1.307	28.289		14.145
61628	GPS Jaffar P-II	Berin Gali	23/11/2006	3.309	0.210	3.519		1.760
61725	GGMS Kuthwal	Kuthwal	23/11/2006	1.230	0.000	1.230		0.615
	Sub Total			48.197	2.376	50.573	0.000	25.287
	Package 17 of education							
61739	GHS Kokal Barseen H-II	Havelian Urban	23/11/2006	26.982	1.450	28.432	8.47	19.962
61709	GPS Havelian No. 3	Havelian Urban	23/11/2006	1.358	0.000	1.358		0.679
61702	GGPS Sajikote	Baldheri	23/11/2006	1.550	0.000	1.550		0.775
61740	GHS Jhangra H-II	Jhangra	23/11/2006	26.982	1.450	28.432		8.470
	Sub Total			56.872	2.900	59.772	8.470	29.886
	Package 18 of Education							
61674	GPS Chapri P-I	Majohan	23/11/2006	2.560	0.179	2.739		1.370
61675	GPS Chando Maira P-II	Majohan	23/11/2006	3.309	0.233	3.542		1.771
61710	GPS Samwala	Majohan	23/11/2006	1.350	0.000	1.350		0.675
61683	GPS Panakha Satora P-I	Nara	23/11/2006	2.560	0.179	2.739		1.370
61724	GGMS Mohri Bed Bhen	Nara	23/11/2006	3.500	0.000	3.500		1.750
61737	GHS Rajoya H-II	Ghari Phulgran	23/11/2006	26.982	1.330	28.312		14.156
61738	GHS Takia Sheikhan H-II	Ghari Phulgran	23/11/2006	26.982	1.330	28.312		14.156
	Sub Total			67.243	3.251	70.494	0.000	35.247
	Package 19 of Education							
61602	GGPS Batta Keri P-I	Nagri Bala	23/11/2006	2.560	0.000	2.560		1.280
61726	GMS Kari Sarafali	Nagri Bala	23/11/2006	1.350	0.000	1.350		0.675
61723	GMS Thunda M-I	Tajwal	23/11/2006	4.394	0.680	5.074		2.537
61712	GPS Tupla	Tajwal	23/11/2006	1.350	0.000	1.350		0.675
61745	GHS Nagri Bala H-II	Nagri Bala	23/11/2006	26.982	1.450	28.432		14.216
	Sub Total			36.636	2.130	38.766	0.000	19.383

Sector: Education
District Reconstruction Unit: Abbottabad
Reconstruction Agency : W&S (PERRA)

S.No	Name of Project & Location	Union Council	Approval Date	Estimated Cost			Estimated Expenditure up to June, 2007	Allocation 2007-08
				Capital	Revenue	Total		
	Package 20 of Education							
61703	GGPS City Abbottabad	Urban Abbottabad	23/11/2006	5.060	0.200	5.260		2.630
61706	GGPS Upper Kehal	Urban Kehal	23/11/2006	3.080	0.200	3.280		1.640
	Sub Total			8.140	0.400	8.540	0.000	4.270
	Package 21 of Education							
61721	GMS Bandi Matrach M-I	Pawa	23/11/2006	4.394	0.613	5.007		2.504
61754	GHSS Rich Bhen HS-II	Pawa	23/11/2006	34.124	2.653	36.777		18.389
61642	GPS Thanna P-IV	Chamhad	23/11/2006	6.436	0.310	6.746		3.373
	Sub Total			44.954	3.577	48.531	0.000	24.266
	Package 22 of Education							
61755	GPG College No 1 Abbottabad	A.Abad Urb	27/01/2007	23.519	0.000	23.519		11.760
61756	GPGC No 2 Mandian	A.Abad Urb	27/01/2007	19.676	0.000	19.676		9.838
61757	GGC No 1	A.Abad Urb	27/01/2007	14.866	0.000	14.866		7.433
61758	GGC Mandian	A.Abad Urb	27/01/2007	6.487	0.000	6.487		3.244
61759	GGC Nawansher	Nawanshehr	27/01/2007	0.907	0.000	0.907		0.454
61760	GC Havelian	Havelian	27/01/2007	0.200	0.000	0.200		0.100
	Sub Total			65.655	0.000	65.655	0.000	32.828
	Grand Total			1,182.761	57.828	1,240.589	99.228	680.634

Annual Work Plan 2007-08

Sector: Education
 District Reconstruction Unit: Abbottabad
 Reconstruction Agency : W&S (PERRA)

S.No	Name of Project & Location	Union Council	Approved by DRAC/PS/SSC/ERRA Board CDWP/ECNEC (Dates of Approval & Completion)	Estimated Cost	Estimated Expenditure up to June, 2007	Allocation for 2007-08
B. New Approved Schemes						
C. New (Un Approved)						
Reconstruction but not included in AWP 2006-2007						
1	GGPS Pehlwan	B/GALI	Un Approved	2.659	0.000	1.330
2	GGPS Ziarat Bakote	Bakote	Un Approved	2.659	0.000	1.330
3	GMPS Sattian De Bandi	Boi	Un Approved	2.659	0.000	1.330
4	GPS Gurdawara Gali	City Urb:	Un Approved	2.659	0.000	1.330
5	GGPS Kiata	G.P.Gran	Un Approved	2.659	0.000	1.330
6	GPS Chabgran	Groeni	Un Approved	2.659	0.000	1.330
7	GPS Nara Buji	KAKUL	Un Approved	2.659	0.000	1.330
8	GGPS Davli Bandi	Kukmong	Un Approved	2.659	0.000	1.330
9	GPS Lassan	Langrial	Un Approved	2.659	0.000	1.330
10	GGPS Noor Pur	Lora	Un Approved	2.659	0.000	1.330
11	GPS Pangoor	N/MAIRA	Un Approved	2.659	0.000	1.330
12	GPS Hillan Sagana	N/Tutial	Un Approved	2.659	0.000	1.330
13	GGPS Kari Sarafali	Natha Gali	Un Approved	2.659	0.000	1.330
14	GPS Khan Malkote	Pluck	Un Approved	2.659	0.000	1.330
15	GGPS Lower Malsa	Sarbhana	Un Approved	2.659	0.000	1.330
16	GGPS Hirran B/Gali	B/GALI	Un Approved	3.462	0.000	1.731
17	GPS Grang	Dalola	Un Approved	3.462	0.000	1.731
18	GGPS Kutli No.1	Groeni	Un Approved	3.462	0.000	1.731
19	GPS Taror	N/Tutial	Un Approved	3.462	0.000	1.731
20	GGPS Malach	Nathiagali	Un Approved	3.462	0.000	1.731
21	GPS Larri	Patr:Kalan	Un Approved	3.462	0.000	1.731
22	GPS Jandar Bari	Phalkote	Un Approved	3.462	0.000	1.731
23	GPS Julgran	Phalkote	Un Approved	3.462	0.000	1.731
24	GGPS Mohalla Taj	Salhad	Un Approved	3.462	0.000	1.731
25	GPS Deedal	Boi	Un Approved	4.221	0.000	2.111
26	GPS Maira Rehmat Khan	Kuthwal	Un Approved	4.221	0.000	2.111
27	GPS Rahi	Lora	Un Approved	4.221	0.000	2.111
28	GPS Mir Pur No.1	Mirpur	Un Approved	4.221	0.000	2.111
29	GPS Bert Bagla	Nammal	Un Approved	4.221	0.000	2.111

Annual Work Plan 2007-08

Sector: Education
 District Reconstruction Unit: Abbottabad
 Reconstruction Agency : W&S (PERRA)

S.No	Name of Project & Location	Union Council	Approved by DRAC/PS/SSCI/ERRA Board CDWP/ECNEC (Dates of Approval & Completion)	Estimated Cost	Estimated Expenditure up to June, 2007	Allocation for 2007-08
30	GGPS Jandar Bari	Phalkote	Un Approved	4.221	0.000	2.111
31	GGPS Utli pand	Phalkote	Un Approved	4.221	0.000	2.111
32	GPS Dhari Rakhala	Phallah	Un Approved	4.221	0.000	2.111
33	GPS Kaseel	B/A/Khan	Un Approved	4.221	0.000	2.111
34	GPS Chatri	Kuthwal	Un Approved	6.613	0.000	3.307
35	GHS Nagri Tutial	N/TUTIAL	Un Approved	28.232	0.000	14.116
36	GPS bandi Hamza	Boi	Un Approved	2.659	0.000	1.330
37	GPS Chooria Gali	Boi	Un Approved	3.462	0.000	1.731
38	GPS Mohri Maira	Boi	Un Approved	2.659	0.000	1.330
39	GGPS Sambli Khuy	Boi	Un Approved	2.659	0.000	1.330
40	GPS Taro Di Bandi	Boi	Un Approved	2.659	0.000	1.330
41	GPS Barbeen	Boi	Un Approved	2.659	0.000	1.330
42	GGPS Dawata	Boi	Un Approved	2.659	0.000	1.330
43	GGPS Kalgran	Dalola	Un Approved	3.462	0.000	1.731
44	GPS Bagla	Dalola	Un Approved	3.462	0.000	1.731
45	GPS Pata Doga	Dalola	Un Approved	2.659	0.000	1.330
46	GPS Talak Ban	Dalola	Un Approved	3.462	0.000	1.731
47	GPS Talkandi	Kukmong	Un Approved	3.462	0.000	1.731
48	GPS Upper Kanthali	Kukmong	Un Approved	2.659	0.000	1.330
49	GGPS Majuhan	Namal	Un Approved	3.221	0.000	1.611
	Total			185.680	0.000	92.840
Repair						
50	GGPS Kaloor	B.P.Khan	Un Approved	1.250	0.000	0.625
51	GGPS Mangal	B.P.Khan	Un Approved	1.300	0.000	0.650
52	GHS Bandi Dhundan	B.P.Khan	Un Approved	13.852	0.000	6.926
53	GGPS Mujhat	B/A/Khan	Un Approved	1.553	0.000	0.777
54	GPS Akhrela	B/GALI	Un Approved	1.358	0.000	0.679
55	GPS Jogi Maira	B/GALI	Un Approved	0.838	0.000	0.419
56	GPS Pellwan	B/GALI	Un Approved	0.838	0.000	0.419
57	GGPS Kehal Rajoya	BAGH	Un Approved	0.845	0.000	0.423
58	GPS Kohalian	Bagh	Un Approved	1.358	0.000	0.679
59	GGHS Bagnoter	Bagnoter	Un Approved	1.475	0.000	0.738
60	GGPS Mohallah Kiyani	Bakote	Un Approved	2.120	0.000	1.060

Annual Work Plan 2007-08

Sector: Education
 District Reconstruction Unit: Abbottabad
 Reconstruction Agency : W&S (PERRA)

S.No	Name of Project & Location	Union Council	Approved by DRAC/PSC/SSC/ERRA Board CDWP/ECNEC (Dates of Approval & Completion)	Estimated Cost	Estimated Expenditure up to June, 2007	Allocation for 2007-08
61	GPS Thurmutian	Bakote	Un Approved	0.625	0.000	0.313
62	GGPS Sajji Kote	Baldhari	Un Approved	1.550	0.000	0.775
63	GPS Mangal	Baldhari	Un Approved	1.660	0.000	0.830
64	GGHS Berote	Berote	Un Approved	1.358	0.000	0.679
65	GHSS Berote	Berote	Un Approved	2.100	0.000	1.050
66	GPS Bandi Berote	Berote	Un Approved	0.525	0.000	0.263
67	GPS Choolta	Berote	Un Approved	0.600	0.000	0.300
68	GPS Julian	Berote	Un Approved	0.575	0.000	0.288
69	GPS Kohalian	Berote	Un Approved	0.585	0.000	0.293
70	GPS Lahoor	Berote	Un Approved	1.450	0.000	0.725
71	GPS Mohra Berote	Berote	Un Approved	1.540	0.000	0.770
72	GPS Nari Hotar	Berote	Un Approved	1.540	0.000	0.770
73	GGPS Bandi Berote	Berote	Un Approved	2.120	0.000	1.060
74	GGPS Birote	Berote	Un Approved	1.540	0.000	0.770
75	GGHS Kunj	City Urb:	Un Approved	3.800	0.000	1.900
76	GGPS Sajji Kote	Deval	Un Approved	1.358	0.000	0.679
77	GHS M.B.Bhan	DEWA L	Un Approved	2.250	0.000	1.125
78	GPS Nagri Payeen	Deval	Un Approved	2.196	0.000	1.098
79	GPS Nalotha	Deval	Un Approved	2.843	0.000	1.422
80	GGHSS Dhamtour	Dhamtour	Un Approved	12.370	0.000	6.185
81	GGPS Dhamtour	Dhamtour	Un Approved	2.352	0.000	1.176
82	GHS Dhamtour	Dhamtour	Un Approved	5.690	0.000	2.845
83	GPS Jaswal	Dhamtour	Un Approved	1.550	0.000	0.775
84	GGPS Malkan	G.P.Gran	Un Approved	1.625	0.000	0.813
85	GPS G.P.Gran	G.P.Gran	Un Approved	1.580	0.000	0.790
86	GPS Hurnara	G.P.Gran	Un Approved	1.580	0.000	0.790
87	GGHSS Havelian	Hav:Urb:	Un Approved	4.983	0.000	2.492
88	GGPS Jarral	Jarral	Un Approved	1.550	0.000	0.775
89	GGHS Kakul	KAKUL	Un Approved	4.230	0.000	2.115
90	GGPS Basali	Kakul	Un Approved	1.550	0.000	0.775
91	GHS Kakul	KAKUL	Un Approved	2.250	0.000	1.125
92	GGPS Upper kehal	Kahal	Un Approved	3.080	0.000	1.540
93	GGPS Kalas Chatri	Khutwal	Un Approved	1.452	0.000	0.726

Annual Work Plan 2007-08

Sector: Education
 District Reconstruction Unit: Abbottabad
 Reconstruction Agency : W&S (PERRA)

S.No	Name of Project & Location	Union Council	Approved by DRAC/PS/SSC/ERRA Board CDWP/ECNEC (Dates of Approval & Completion)	Estimated Cost	Estimated Expenditure up to June, 2007	Allocation for 2007-08
94	GGPS Dubran	Langrial	Un Approved	1.358	0.000	0.679
95	GGHSS Lora	LORA	Un Approved	4.500	0.000	2.250
96	GPS Narhoter	Lora	Un Approved	1.717	0.000	0.859
97	GPS Hajia gali	Majoohan	Un Approved	1.442	0.000	0.721
98	GHS Chando Maira	Majuhan	Un Approved	3.100	0.000	1.550
99	GGHSS Malik Pura	Malik Pura	Un Approved	2.870	0.000	1.435
100	GHS Mir Pur	Mir Pur	Un Approved	3.950	0.000	1.975
101	GPS Mian De sari	Mirpur	Un Approved	1.600	0.000	0.800
102	GGHS Nawan Shehr	N.Shehr	Un Approved	2.250	0.000	1.125
103	GGHS Nawan shehr	N.Shehr	Un Approved	3.530	0.000	1.765
104	GGPS Dakhan Tatreela	N/BALA	Un Approved	1.358	0.000	0.679
105	GPS Noor Mang	N/MAIRA	Un Approved	1.358	0.000	0.679
106	GGPS Batangi	N/Tutial	Un Approved	0.550	0.000	0.275
107	GGPS Khoian	N/Tutial	Un Approved	1.850	0.000	0.925
108	GPS Batangi	N/Tutial	Un Approved	1.440	0.000	0.720
109	GPS Baiknala	N/Tutial	Un Approved	1.358	0.000	0.679
110	GPS Chonali	N/Tutial	Un Approved	1.358	0.000	0.679
111	GPS Nakhatither	Nammal	Un Approved	0.950	0.000	0.475
112	GPS Payian	Nammal	Un Approved	1.358	0.000	0.679
113	GGPS Kulanda	NARA	Un Approved	1.358	0.000	0.679
114	GGPS Satora	Nara	Un Approved	1.358	0.000	0.679
115	GHS Satora	NARA	Un Approved	1.240	0.000	0.620
116	GPS Pona	Nara	Un Approved	1.358	0.000	0.679
117	GPS Satora	Nara	Un Approved	1.858	0.000	0.929
118	GPS Sumal Dhara	NARA	Un Approved	1.358	0.000	0.679
119	GGHS Kari Raki	Natha Gali	Un Approved	0.838	0.000	0.419
120	GGPS Budhair	Natha Gali	Un Approved	0.838	0.000	0.419
121	GHSS Natha Gali	Natha Gali	Un Approved	4.360	0.000	2.180
122	GPS Budiar	Natha Gali	Un Approved	0.838	0.000	0.419
123	GPS Maira Pasala	Natha Gali	Un Approved	1.200	0.000	0.600
124	GGPS No: 1 Nawansher	Nawansher	Un Approved	1.358	0.000	0.679
125	GHS Pattan Khurd	Patt:Kalan	Un Approved	4.350	0.000	2.175
126	GGPS Shaiqqa	Pawa	Un Approved	1.652	0.000	0.826

Annual Work Plan 2007-08

Sector: Education
 District Reconstruction Unit: Abbottabad
 Reconstruction Agency : W&S (PERRA)

S.No	Name of Project & Location	Union Council	Approved by DRAC/PSC/SSC/ERRA Board CDWP/ECNEC (Dates of Approval & Completion)	Estimated Cost	Estimated Expenditure up to June, 2007	Allocation for 2007-08
127	GHS Pawa	Pawa	Un Approved	3.540	0.000	1.770
128	GGPS Pangoora	Phalkote	Un Approved	1.478	0.000	0.739
129	GPS Phalkote	Phalkote	Un Approved	1.358	0.000	0.679
130	GGPS Phallah	Phallah	Un Approved	1.859	0.000	0.930
131	GPS Khans Pur	PLUCK	Un Approved	1.358	0.000	0.679
132	GHS Muslim Abad	Salhad	Un Approved	4.542	0.000	2.271
133	GGPS Ammana	Seer	Un Approved	2.145	0.000	1.073
134	GGPS Dharah	Seer	Un Approved	2.123	0.000	1.062
135	GGPS Kalas	Seer	Un Approved	1.345	0.000	0.673
136	GHS Ziarat Masoom	SEER	Un Approved	1.400	0.000	0.700
137	GHS Sherwan	Sherwan	Un Approved	3.852	0.000	1.926
138	GGPS Tnunda	Tajwal	Un Approved	1.050	0.000	0.525
139	GHS Tajwal	Tajwa l	Un Approved	3.000	0.000	1.500
140	GPS Bajwan	Tajwal	Un Approved	1.150	0.000	0.575
141	GPS Tupla	Tajwal	Un Approved	1.358	0.000	0.679
142	GGPS Kasoomi	Dalola	Un Approved	0.550	0.000	0.275
143	GGPS Nagri Payeen	Dewal	Un Approved	0.200	0.000	0.100
144	GGPS Banda Abdul Jabar	G.P.Gran	Un Approved	0.458	0.000	0.229
145	GGPS Kuliola	Jarral	Un Approved	0.890	0.000	0.445
146	GGPS Rawlay	Khutwal	Un Approved	0.890	0.000	0.445
147	GGPS Dakhan Chammaka	Majooohan	Un Approved	0.745	0.000	0.373
148	GGPS Chappri	Majuhan	Un Approved	0.963	0.000	0.482
149	GGPS Dhakan	N//Bala	Un Approved	0.648	0.000	0.324
150	GGPS Jhansa	N/Gali	Un Approved	0.548	0.000	0.274
151	GGPS BHATTIAN	N/Tutial	Un Approved	0.675	0.000	0.338
152	GGPS NAGRI TOTIAL	N/Tutial	Un Approved	0.838	0.000	0.419
153	GGPS Sial Kote	Pat:Kalan	Un Approved	0.580	0.000	0.290
154	GGPS Tharyati	Phalkote	Un Approved	0.365	0.000	0.183
155	GGPS Dhari Maira	Salhad	Un Approved	0.950	0.000	0.475
156	GGPS Basoot	Tajwal	Un Approved	0.500	0.000	0.250
157	GPS Totmi	Chamhad	Un Approved	0.650	0.000	0.325
158	GPS Jaswal	Dhamtour	Un Approved	0.789	0.000	0.395
159	GPS Tangola	Kakul	Un Approved	0.543	0.000	0.272

Annual Work Plan 2007-08

Sector: Education

District Reconstruction Unit: Abbottabad

Reconstruction Agency : W&S (PERRA)

S.No	Name of Project & Location	Union Council	Approved by DRAC/PPSC/SSC/ERRA Board CDWP/ECNEC (Dates of Approval & Completion)	Estimated Cost	Estimated Expenditure up to June, 2007	Allocation for 2007-08
160	GPS Amilala	LANGRA	Un Approved	0.475	0.000	0.238
161	GPS Lari Saydan	LANGRA	Un Approved	0.750	0.000	0.375
162	GPS Sian Da Katha	Mirpur	Un Approved	0.950	0.000	0.475
163	GPS Akhora	Namal	Un Approved	0.520	0.000	0.260
164	GPS Chanjah	Nara	Un Approved	0.470	0.000	0.235
165	GPS Dana Bagan	Natha Gali	Un Approved	0.950	0.000	0.475
166	GPS Jhansa	Natha Gali	Un Approved	0.635	0.000	0.318
167	GPS Khatar bagan	Natha Gali	Un Approved	0.380	0.000	0.190
168	GPS Bandi Sarrara	Patt:Kalan	Un Approved	0.838	0.000	0.419
169	GPS Barwala	Patt:Kalan	Un Approved	0.550	0.000	0.275
170	GPS Chamali	Patt:Kalan	Un Approved	0.620	0.000	0.310
171	GPS Dand Khater	Patt:Kalan	Un Approved	0.450	0.000	0.225
172	GPS Gehar	Patt:Kalan	Un Approved	0.525	0.000	0.263
173	GPS Kutla	Patt:Kalan	Un Approved	0.838	0.000	0.419
174	GPS Dakhan	Seer	Un Approved	0.838	0.000	0.419
175	GPS Kaghian	Tajwal	Un Approved	0.750	0.000	0.375
176	GPS Pir Kote	Tajwal	Un Approved	0.500	0.000	0.250
177	GHS Banda Pir Khan	B.P.Khan	Un Approved	0.783	0.000	0.392
178	GHS No.1 Havelian	Hav:Urb:	Un Approved	0.040	0.000	0.020
179	GHS No.2 Havelian	Hav:Urb:	Un Approved	0.735	0.000	0.368
180	GHS Seer	SEER	Un Approved	0.625	0.000	0.313
181	GGPS Bandi Dhondan	B.P Khan	Un Approved	1.600	0.000	0.800
182	GGPS Murdey Pattian	B.P Khan	Un Approved	1.800	0.000	0.900
183	GGPS Loon Pattian	B.P Khan	Un Approved	1.800	0.000	0.900
184	GGPS Jabri Tarnawi	B.P.Kha n	Un Approved	1.600	0.000	0.800
185	GHS Tarnawai	B.P.Kha n	Un Approved	3.000	0.000	1.500
186	GPS Kali Dhar	B.P.Kha n	Un Approved	1.375	0.000	0.688
187	GPS Tannan	B.P.Kha n	Un Approved	1.120	0.000	0.560
188	GPS Ander Seri	B/Gali	Un Approved	1.540	0.000	0.770
189	GPS BegarMal	Bagh	Un Approved	1.420	0.000	0.710
190	GPS Dhari kehal	BAGH	Un Approved	1.235	0.000	0.618
191	GGPS Chatar Nath	Bagnoter	Un Approved	0.980	0.000	0.490
192	GHSS Bagnoter	Bagnoter	Un Approved	11.140	0.000	5.570

Annual Work Plan 2007-08

Sector: Education
 District Reconstruction Unit: Abbottabad
 Reconstruction Agency : W&S (PERRA)

S.No	Name of Project & Location	Union Council	Approved by DRAC/PSC/SSC/ERRA Board CDWP/ECNEC (Dates of Approval & Completion)	Estimated Cost	Estimated Expenditure up to June, 2007	Allocation for 2007-08
193	GPS Maira Bagnoter	Bagnoter	Un Approved	0.695	0.000	0.348
194	GPS Sari	Bagnoter	Un Approved	0.435	0.000	0.218
195	GGPS Ali Abad	Bakote	Un Approved	0.300	0.000	0.150
196	GGPS Jabri Khun Kalan	Bakote	Un Approved	2.120	0.000	1.060
197	GGPS Khun Khurd	Bakote	Un Approved	2.120	0.000	1.060
198	GGPS Moolia	Bakote	Un Approved	1.800	0.000	0.900
199	GGPS Pikhoo Nakar	Bakote	Un Approved	2.120	0.000	1.060
200	GPS Bakote	Bakote	Un Approved	0.550	0.000	0.275
201	GPS Bali Kote	Bakote	Un Approved	0.560	0.000	0.280
202	GPS Batmala	Bakote	Un Approved	0.490	0.000	0.245
203	GPS Lower Bakote	Bakote	Un Approved	1.250	0.000	0.625
204	GPS Nakar Khan Kalan	Bakote	Un Approved	0.590	0.000	0.295
205	GPS Topa Khan Khan Kalan	Bakote	Un Approved	0.595	0.000	0.298
206	GGHS Saji Kote	Baldhari	Un Approved	1.645	0.000	0.823
207	GGPS Baldhari	Baldhari	Un Approved	0.978	0.000	0.489
208	GGPS Hill Maira	Baldhari	Un Approved	1.280	0.000	0.640
209	GGPS Kholay Q. Abad	Baldhari	Un Approved	1.250	0.000	0.625
210	GGPS More Kalan	Baldhari	Un Approved	2.120	0.000	1.060
211	GPS Baldhari	Baldhari	Un Approved	1.550	0.000	0.775
212	GPS Chabrian	Baldhari	Un Approved	1.680	0.000	0.840
213	GPS Chita Maira	Baldhari	Un Approved	1.710	0.000	0.855
214	GPS More Kalan	Baldhari	Un Approved	1.880	0.000	0.940
215	GPS Tannan	Baldhari	Un Approved	1.760	0.000	0.880
216	GPS Hill Berote	Berote	Un Approved	0.625	0.000	0.313
217	GPS Hotrary	Berote	Un Approved	0.595	0.000	0.298
218	GGPS Hotrary	Berote	Un Approved	2.120	0.000	1.060
219	GGPS Chatta Mohri	Chamad	Un Approved	2.120	0.000	1.060
220	GGPS Baram GALI	Chamhad	Un Approved	1.375	0.000	0.688
221	GGPS Chamhad	Chamhad	Un Approved	1.275	0.000	0.638
222	GGPS Kasaki Khurd	Chamhad	Un Approved	1.542	0.000	0.771
223	GHS Bhuraj	Chamhad	Un Approved	1.820	0.000	0.910
224	GHS Chamhad	Chamhad	Un Approved	2.500	0.000	1.250
225	GPS Chamhad	Chamhad	Un Approved	1.200	0.000	0.600

Annual Work Plan 2007-08

Sector: Education

District Reconstruction Unit: Abbottabad

Reconstruction Agency : W&S (PERRA)

S.No	Name of Project & Location	Union Council	Approved by DRAC/PS/SSC/ERRA Board CDWP/ECNEC (Dates of Approval & Completion)	Estimated Cost	Estimated Expenditure up to June, 2007	Allocation for 2007-08
226	GGHS No.1 Abbottabad	City Urb:	Un Approved	3.540	0.000	1.770
227	GGPS Clity Abbottabad	City Urb:	Un Approved	5.060	0.000	2.530
228	GGPS Kulanda(Mohra)	Dewal	Un Approved	1.358	0.000	0.679
229	GHS Makool payeen	DEWAL	Un Approved	3.600	0.000	1.800
230	GPS Dewal	Dewal	Un Approved	1.589	0.000	0.795
231	GPS Pathian	Dewal	Un Approved	1.358	0.000	0.679
232	GPS Phal Kote	Dewal	Un Approved	1.338	0.000	0.669
233	GGPS Hari De ban	B.P.Khan	Un Approved	0.777	0.000	0.389
234	GGPS Jabbar	B.P.Khan	Un Approved	0.542	0.000	0.271
235	GGPS Kali Dhar	B.P.Khan	Un Approved	0.578	0.000	0.289
236	GGPS Mandroch	B.P.Khan	Un Approved	0.576	0.000	0.288
237	GGPS Manu De Ban	B.P.Khan	Un Approved	0.585	0.000	0.293
238	GGPS Samasar	B.P.Khan	Un Approved	0.585	0.000	0.293
239	GGPS Shamshar Naka	B.P.Khan	Un Approved	0.586	0.000	0.293
240	GGPS Tarhana	B.P.Khan	Un Approved	0.743	0.000	0.372
241	GGPS Gagan	B/A/Khan	Un Approved	0.485	0.000	0.243
242	GGPS Tarmehian	B/A/Khan	Un Approved	0.150	0.000	0.075
243	GGPS Geh	Bagnoter	Un Approved	0.345	0.000	0.173
244	GGPS Khuri Banda	Bagnoter	Un Approved	0.479	0.000	0.240
245	GGPS Faizabad	Bakote	Un Approved	0.645	0.000	0.323
246	GGCMS Chabrian	Baldhari	Un Approved	0.985	0.000	0.493
247	GGPS Reean	Bagnoter	Un Approved	0.650	0.000	0.325
248	GGPS Mohra	Birote	Un Approved	0.645	0.000	0.323
249	GGPS BAGH DARA	Chamhad	Un Approved	0.742	0.000	0.371
250	GGPS CHMAK MAIRA	Chamhad	Un Approved	0.745	0.000	0.373
251	GGPS Kassaki Kalan	Chamhad	Un Approved	0.548	0.000	0.274
252	GGPS Nalota	Dewal	Un Approved	0.300	0.000	0.150
253	GGPS Palkote	Dewal	Un Approved	0.400	0.000	0.200
254	GGPS Pathien	Dewal	Un Approved	0.154	0.000	0.077
255	GGPS Choona	Dhamtour	Un Approved	0.770	0.000	0.385
256	GGPS Banda Shakhian	G.P.Gran	Un Approved	0.210	0.000	0.105
257	GGPS Batala	G.P.Gran	Un Approved	0.459	0.000	0.230
258	GGPS G.P.Gran	G.P.Gran	Un Approved	0.845	0.000	0.423

Annual Work Plan 2007-08

Sector: Education
 District Reconstruction Unit: Abbottabad
 Reconstruction Agency: W&S (PERRA)

S.No	Name of Project & Location	Union Council	Approved by DRAC/PSC/SSC/ERRA Board CDWP/ECNEC (Dates of Approval & Completion)	Estimated Cost	Estimated Expenditure up to June, 2007	Allocation for 2007-08
259	GGPS Ghora Bazgran	G.P.Gran	Un-Approved	0.945	0.000	0.473
260	GGPS Kutli No.2 Goreeni	Goreeni	Un-Approved	0.890	0.000	0.445
261	GGPS Gajjal	Hav: Urb:	Un-Approved	0.435	0.000	0.218
262	GGGMS Dharian	Jhangi	Un-Approved	0.775	0.000	0.388
263	GGPS BOI DE GALI	Jhangi	Un-Approved	0.850	0.000	0.425
264	GGPS Banda Lamba	Jhangi	Un-Approved	1.320	0.000	0.660
265	GGPS Sultan Pur	Jhangra	Un-Approved	0.680	0.000	0.340
266	GGPS Wazeeran	Jhangra	Un-Approved	0.345	0.000	0.173
267	GGPS Choona Kari	Kakul	Un-Approved	0.875	0.000	0.438
268	GGPS Neelot	Kakul	Un-Approved	0.548	0.000	0.274
269	GGPS Kakul No.1	Kakul	Un-Approved	0.560	0.000	0.280
270	GGPS Chatri	Khutwal	Un-Approved	0.325	0.000	0.163
271	GGPS Pather gali	Kukmang	Un-Approved	0.985	0.000	0.493
272	GGPS Kukmong	Kukmong	Un-Approved	0.550	0.000	0.275
273	GGPS Gali Bamian	Kuthwal	Un-Approved	0.838	0.000	0.419
274	GGPS Kanyat	Kuthwal	Un-Approved	0.465	0.000	0.233
275	GGPS Mohar Kaln	Kuthwal	Un-Approved	0.540	0.000	0.270
276	GGPS Rarra Thipper	Langrial	Un-Approved	0.545	0.000	0.273
277	GGPS Gali Battagram	Langrial	Un-Approved	0.545	0.000	0.273
278	GGPS Dhari Kiata	Lora	Un-Approved	0.560	0.000	0.280
279	GGPS Sari	Lora	Un-Approved	0.458	0.000	0.229
280	GGPS Kund Battal	Lora	Un-Approved	0.689	0.000	0.345
281	GGPS Danaak	Majooohan	Un-Approved	0.425	0.000	0.213
282	GGGMS Sumwala	Majooohan	Un-Approved	0.750	0.000	0.375
283	GGPS Cham Naka	Majuhan	Un-Approved	0.015	0.000	0.008
284	GGPS Karach	Majuhan	Un-Approved	0.017	0.000	0.009
285	GGPS Maira Payeen	Majuhan	Un-Approved	0.275	0.000	0.138
286	GGPS Noja Bandi	Majuhan	Un-Approved	0.270	0.000	0.135
287	GGPS MAK/OOL BALA	N/Bala	Un-Approved	0.625	0.000	0.313
288	GGPS Tarceala	N/Bala	Un-Approved	0.750	0.000	0.375
289	GGPS Namli Maira	N/Maira	Un-Approved	0.850	0.000	0.425
290	GGPS Upper Maira Kalan	N/Mira	Un-Approved	0.625	0.000	0.313
291	GGPS Tarhatti	Namal	Un-Approved	0.570	0.000	0.285

Annual Work Plan 2007-08

Sector: Education

District Reconstruction Unit: Abbottabad

Reconstruction Agency : W&S (PERRA)

S.No	Name of Project & Location	Union Council	Approved by DRAC/PSC/SSC/ERRA Board CDWP/ECNEC (Dates of Approval & Completion)	Estimated Cost	Estimated Expenditure up to June, 2007	Allocation for 2007-08
292	GGPS Harlan	NARA	Un Approved	0.470	0.000	0.235
	Total			347.264	0.000	173.632
	Total (New)			532.944	0.000	266.472
	G-Total (Ongoing+New)			1,773.533	99.228	947.106

ANNUAL WORK PLAN 2007-08

Sector: Industries
 District Reconstruction Unit: Abbottabad
 Reconstruction Agency: NWFP Industry Department

S#	i. Name of the project ii. Location	Location	Approved by DRAC/PSC/SSC ERRA BOARD CDWP/ECNEC (Dates of approval & completion)	Estimated Cost		Estimated Expenditure Up to June, 2007, Total(F- Aid)	Allocation for 2007-08		
				Total	Foreign Aid(FEC)		Rupee	Foreign Exchange	Total
1	2		3	4	5	6	7	8	9
A) On going									
1	GPGCC Jhangi A. Abad	Jhangi	DRAC 7th Meeting 23 Nov, 2006	10.02	-	-	5.010	-	5.010
2	GCT A.Abad	Abbottabad	do	10.00	-	-	5.000	-	5.000
3	Distt. Transport Authority Office City	Abbottabad	do	10.06	-	-	5.030	-	5.030
4	GTVC (W) Sheikhuibandi A.Abad	Sheikhuibandi	do	45.00	-	-	22.500	-	22.500
5	GTVC (B) Nawanshehr A.Abad	Nawanshehr	do	2.00	-	-	1.000	-	1.000
Total				77.080			38.540		38.540

ANNUAL WORK PLAN 2007-08

**WATSAN
Abbottabad**

Sector: District Reconstruction Unit:

S#	Name of Schemes	Approved by DRAC/PSC/SSC ERRA BOARD CDWP/ECNEC (Dates of approval & completion)	Union Council	Estimated Cost (Rs. In Million)		Estimated Expenditure upto June 2007 (Rs. In Million)	Allocation for 2007-08 (Rs. In Million)		
				Local	Foreign Aid		Rupees	Foreign	Total
A	On-Going Projects								
	PHE DEPARTMENT								
1	WSS Mangal	Approved by DRAC on 29/09/2006.	Banda Pir Khan	1.700		0.680	1.020	0.000	1.020
2	WSS Bandi Dhundan	do	do	6.500		2.600	3.900	0.000	3.900
3	WSS Tanan	do	do	0.400		0.160	0.240	0.000	0.240
4	WSS Mandroach & Smaser	do	do	0.900		0.360	0.540	0.000	0.540
5	WSS Kalu Di Bandi	do	do	4.000		1.600	2.400	0.000	2.400
6	WSS Tarnawai	do	do	3.000		1.200	1.800	0.000	1.800
7	WSS Bagh	do	Bagh	3.000		1.200	1.800	0.000	1.800
8	WSS Bagnotar Galaga	do	Bagnotar	2.500		1.000	1.500	0.000	1.500
9	WSS Khan Khurd	do	Beerot	2.500		1.000	1.500	0.000	1.500
10	WSS Beerot Kalan	do	do	2.000		0.800	1.200	0.000	1.200
11	WSS Lahoor Mohra	do	do	3.000		1.200	1.800	0.000	1.800
12	WSS Hari Khetar	do	Dewal Manal	8.500		3.400	5.100	0.000	5.100
13	WSS Nagri Tarii Dewal	do	do	1.500		0.600	0.900	0.000	0.900
14	WSS Banda Said Khan	do	Garhi Phulgran	4.100		1.640	2.460	0.000	2.460
15	WSS Sajawal Kokari	do	do	1.890		0.756	1.134	0.000	1.134
16	WSS Rajoia	do	do	0.700		0.280	0.420	0.000	0.420
17	WSS Dera wand	do	Jhangri	7.700		3.080	4.620	0.000	4.620
18	WSS Lamma Maira Banda jalal Khan	do	do	4.500		1.800	2.700	0.000	2.700
19	WSS Dobatar Banda Amlak	do	do	4.950		1.980	2.970	0.000	2.970
20	WSS Banda Phugwarian	do	do	4.000		1.600	2.400	0.000	2.400
21	WSS Lamba Banda	do	do	3.250		1.300	1.950	0.000	1.950
22	WSS Banda Khair Ali Khan	do	do	0.600		0.240	0.360	0.000	0.360
23	WSS Jhangri	do	do	2.500		1.000	1.500	0.000	1.500
24	WSS banda Ghazan	do	do	3.500		1.400	2.100	0.000	2.100
25	WSS Jhangra Kashka	do	Jhangra	3.400		1.360	2.040	0.000	2.040
26	WSS Havellian Vill.	do	do	1.000		0.400	0.600	0.000	0.600
27	WSS Danna	do	Kuthwal	5.000		2.000	3.000	0.000	3.000
28	WSS Maira Rehmat Khan	do	do	2.500		1.000	1.500	0.000	1.500
29	WSS Chattri	do	do	1.600		0.640	0.960	0.000	0.960
30	WSS Langrial	do	Langrial	1.300		0.520	0.780	0.000	0.780
31	WSS Lissan	do	do	0.700		0.280	0.420	0.000	0.420
32	WSS Samwala	do	Majuhan	0.600		0.240	0.360	0.000	0.360
33	WSS Islam kot	do	Mirpur	4.400		1.760	2.640	0.000	2.640
34	WSS Mian Di Seri Pines Kliff	do	do	4.100		1.640	2.460	0.000	2.460
35	WSS Mirpur	do	do	3.500		1.400	2.100	0.000	2.100
36	WSS Nammal	do	Nammal/Majuhan	2.200		0.880	1.320	0.000	1.320
37	WSS Majuhan	do	do	2.500		1.000	1.500	0.000	1.500
38	WSS Kurli	do	do	1.200		0.480	0.720	0.000	0.720

ANNUAL WORK PLAN 2007-08

**WATSAN
Abbottabad**

Sector:
District Reconstruction Unit:

S#	Name of Schemes	Approved by DRAC/PSC/SSC ERRA BOARD CDWP/ECNEC (Dates of approval & completion)	Union Council	Estimated Cost (Rs. In Million)		Estimated Expenditure upto June 2007 (Rs. In Million)	Allocation for 2007-08 (Rs. In Million)			
				Local	Foreign Aid		Rupees	Foreign	Total	
2	Rehabilitation of Drinking Water Supply scheme Nawanshehr (urban)	do	Nawan sher Urban	7.840		7.840				
3	H/Pump Bagh Larri Village Malsa U/C Phalkot	do	Phalkote	0.100		0.100				
4	H/Pump Batiangi village Malsa U/C Phalkot	do	do	0.100		0.100				
5	Pump Sorra Village Malsa U/C Phalkot	do	do	0.100		0.100				
6	Pump Village Dhonaga Lowe Kuhn U/C Sarbhana	do	Sarbhana	0.100		0.100				
7	Pump Village Seergah C Sarbhana	do	do	0.100		0.100				
8	Hand Pump Upper Khunt C Sarbhana	do	do	0.100		0.100				
9	Mohallah Bunkot U/C Sarbhana	do	do	0.100		0.100				
10	Mohallah Daria U/C Sarbhana	do	do	0.100		0.100				
11	Mohallah Sunwalla U/C Sarbhana	do	do	0.100		0.100				
12	Water Tank Village	do	do	0.100		0.100				
13	Mohallah Toot Bagla U/C Sarbhana	do	do	0.100		0.100				
			Total	18.490		18.490				
TMA ABBOTTABAD (SANITATION)										
1	Pavement of Mian Road Mohallah Maira	do	Sarbhana	0.150		0.150				
2	Payment of Street ZiaratKao to GGPS Disal	do	do	0.500		0.500				
3	Quain din	do	do	0.450		0.450				
4	Pavement of Street from H/O MianDad to Molvi Aziz Ur Rehman House Mohallah Bankot	do	do	0.450		0.450				
5	Pavement of Road Mohar Khurd to Pitch Dhoka Village Mohar Khurd	do	do	2.320		2.320				
6	Pavement of Street GPS to Masjid Seerga	do	do	0.445		0.445				
			Total	4.315		4.315				
TMA HAVELIAN (WSS)										
1	B/I of Hand Pump Ziarat Sajikot	do	Dewal Manal	0.100		0.100				
2	B/I of Hand pump Mohala Batanga Sajikot	do	do	0.100		0.100				
3	B/I of Hand pumps Mohalla Mohari Budbhen	do	do	0.100		0.100				
4	Repair of Tube Well No. 2	do	Hvelian	0.168		0.168				

ANNUAL WORK PLAN 2007-08

Sector: **WATSAN**
District Reconstruction Unit: **Abbottabad**

S#	Name of Schemes	Approved by DRAC/PSC/SSC ERRA BOARD CDWP/ECNEC (Dates of approval & completion)	Union Council	Estimated Cost (Rs. In Million)		Estimated Expenditure upto June 2007 (Rs. In Million)	Allocation for 2007-08 (Rs. In Million)		
				Local	Foreign Aid		Rupees	Foreign	Total
5	B/A of 5 nos Hand Pump Madian Lora	do	Lora	0.500		0.500			
6	B/A of 5 Nos. Hand Pumps Village Ghari	do	do	0.500		0.500			
7	B/A of 10 Nos. Hand Pumps in Village Banani	do	Nagri tutial	1.000		1.000			
8	B/A of Hand Pump Dheri Kalandra	do	Nara	0.100		0.100			
9	B/A of 5 Nos. Hand Pumps in Baswair	do	Seer Gharbi	0.500		0.500			
10	B/A of 5 Nos. Hand Pumps in Village Danna Bloch	do	do	0.500		0.500			
11	B/A of 5 Nos. Hand Pumps in Village Malmola	do	do	0.500		0.500			
12	WSS Lower Bhatin	do	Seer Sharqi	0.500		0.500			
13	WSS Thatthi Battian	do	do	1.000		1.000			
			Total	5.568		5.568			
B	NEW APPROVED PROJECTS								
1	Reconstruction/Repair of office /Residential Buildings of PHE Dept.	Approved by DRAC on 23/11/2006	Abbottabad	2.164			2.164		2.164
2	Repair of Buildings TMA Havalian UC Havalian	do	Havelian	1.890			1.890		1.890
		Sub Total		4.054			4.054		4.054
		ongoing		219.763		104.929	114.834	0.000	114.834
				223.817		104.929	118.888	0.000	118.888
			Grand Total						

ANNUAL WORK PLAN 2007-08

Sector: Roads

District Reconstruction Unit: Abbottabad

Reconstruction Agency: W&S Deptt: (PERRA) Abbottabad

S#	i. Name of the project ii. Location	3	Estimated Cost		6	Allocation for 2007-08		
			Approved by DRAC/PSC/SSC ERRA BOARD CDWP/ECNEC (Dates of approval & completion)	Total		Foreign Aid(FEC)	Estimated Expenditure Up to June, 2007, Total(F-Aid)	Rupee
1	2	3	4	5	6	7	8	9
A. On-Going Projects								
i) CATEGORY-I (ADB Funded)								
1	Takia Sheikhan Cher Road(U/C G.Phulgran & Dewal Menal)	5th DRAC 7-08-2006	32.239	13.260	14.133	18.106	-	18.106
2	Bagnotar Namli Maira Road.(U/C Namli Maira)	9th DRAC 27-01-2007	34.682	18.000	13.873	20.809	-	20.809
3	Nathia Gali Bakot Road.(U/C Bakot)	5th DRAC 7-08-2006	21.300	13.000	8.520	12.780	-	12.780
4	Kohala Moolia Namal Road. (U/C Namal)	9th DRAC 27-01-2007	31.564	21.000	12.625	18.939	-	18.939
5	Lumba Maira Jhangri Road. u/c (Jhangri)	10th DRAC 26-03-2007	6.237	3.500	3.737	2.500	-	2.500
6	Mirpur Maira Road with link to Habibullah Colony.u/c (Mirpur)	5th DRAC 7-08-2006	6.500	3.000	2.000	4.500	-	4.500
7	Dalola Hadora Bandi Road.u/c (Dalola)	10th DRAC 26-03-2007	11.588	5.600	4.088	7.500	-	7.500
8	Phullian-Wali-Kanyal Road (u/c Banda Atai Khan)	10th DRAC 26-03-2007	38.138	38.138	11.538	26.600	-	26.600
9	Abbottabd Sherwan Road.(U/C Sherwan – Khutiala) (Mirpur)	9th DRAC 27-01-2007	100.000	20.000	30.000	70.000	-	70.000
10	Kotera Salol Bandi Road.(u/c Pattan Kalan)	9th DRAC 27-01-2007	4.000	2.500	1.200	2.800	-	2.800
11	Thandiani Khokriala Darair Road.(Pattan Kalan)	9th DRAC 27-01-2007	13.000	10.500	3.900	9.100	-	9.100
12	Trech Nakhatier Langloot Road.(u/c Nammal)	9th DRAC 27-01-2007	2.000	2.000	0.600	1.400	-	1.400
13	Khanispur Riالا Road.(Pluck)	9th DRAC 27-01-2007	5.000	5.000	2.000	3.000	-	3.000
14	Hathrari Road.(u/c Berote)	9th DRAC 27-01-2007	3.000	3.000	0.900	2.100	-	2.100
15	Ziarat Masoom Nagri Totial Road.(u/c Seer Gharbi)	9th DRAC 27-01-2007	3.000	3.000	0.900	2.100	-	2.100
16	Link Road Sanja. (u/c Kokmang)	9th DRAC 27-01-2007	2.000	1.000	0.600	1.400	-	1.400
17	Barrian Kalkot Goreeni Road.(u/c Goreeni)	9th DRAC 27-01-2007	1.000	1.000	0.300	0.700	-	0.700
18	Thalla Namal Road.(u/c Nammal)	9th DRAC 27-01-2007	1.500	1.500	0.450	1.050	-	1.050
19	Majute Beri Bagla Road.(u/c Nammal)	9th DRAC 27-01-2007	2.500	2.500	0.750	1.750	-	1.750
20	Payeen Tarhatti Road.(u/c Nammal)	9th DRAC 27-01-2007	1.500	1.500	0.450	1.050	-	1.050
21	Trech Majohan Road.(u/c Majohan)	9th DRAC 27-01-2007	2.000	2.000	0.600	1.400	-	1.400
22	Bandi Leeran Road (u/c Nammal)	9th DRAC 27-01-2007	2.000	2.000	0.600	1.400	-	1.400

ANNUAL WORK PLAN 2007-08

Sector:

Roads

District Reconstruction Unit:

Abbottabad

Reconstruction Agency:

W&S Deptt: (PERRA) Abbottabad

S#	i. Name of the project ii. Location	Approved by DRAC/PSC/SSC ERRA BOARD CDWP/ECNEC (Dates of approval & completion)	Estimated Cost		Estimated Expenditure Up to June, 2007, Total(F-Aid)	Allocation for 2007-08			
			Total	Foreign Aid(FEC)		Rupee	Foreign Exchange	Total	
1	2	3	4	5	6	7	8	9	
23	Thandiani Pattan Khurd Road.(u/c Pattan Kalan- Khurd)	10th DRAC 26-03-2007	79.800	56.000	27.948	51.852	-	51.852	
24	Mandian Banda Ali Khan Road.	10th DRAC 26-03-2007	4.427	4.427	2.427	2.000	-	2.000	
25	Abbottabad Thandiani Road (u/c Khutwal)	10th DRAC 26-03-2007	12.047	12.047	3.500	8.547	-	8.547	
26	Boi Chack Road i/c Link Hadora Bogran (u/c Boi)	10th DRAC 26-03-2007	12.000	12.000	3.600	8.400	-	8.400	
	SUB TOTAL (i)		433.022	257.472	151.239	281.783	0.000	281.783	
ii) CATEGORY-II (ADB FUNDED)									
27	Sawar Gali Lahoor Road (U/C Pluck)	5th DRAC 7-08-2006	85.000	85.000	25.500	59.500	-	59.500	
28	Maira Rehat Kanthiali Boi Road (Kuthwal & Dalola Daban Road.(U/C Dalola)	10th DRAC 26-03-07	135.000	117.000	20.250	114.750	-	114.750	
29	Boi Sathal Road.(U/C Boi)	10th DRAC 26-03-07	22.500	18.000	3.775	18.725	-	18.725	
30	Lora Sawargali Road.(U/C Nagri Totial/Lora)	10th DRAC 26-03-07	23.000	23.000	3.450	19.550	-	19.550	
31	Bakot Sungreeri Road(U/C Berote) .	10th DRAC 26-03-07	85.000	52.000	12.750	72.250	-	72.250	
32	Namli Gali Khan Kalan Road. (U/C Bakot)	10th DRAC 26-03-07	12.000	12.000	1.800	10.200	-	10.200	
33	Haro Summa Garaka Road. (U/C Goreeni)	10th DRAC 26-03-07	29.000	29.000	4.350	24.650	-	24.650	
34	Batnara Link Road.(U/C Seer Sharqi)	10th DRAC 26-03-07	6.000	6.000	0.900	5.100	-	5.100	
35	Cher Sajjangali Kalabagh Road.(U/C Dewal Menal/Nagri Bala)	10th DRAC 26-03-07	6.000	6.000	0.900	5.100	-	5.100	
36	Sajjikot Satora Jabri Road. (U/C Nara)	10th DRAC 26-03-07	88.000	88.000	13.200	74.800	-	74.800	
37	Bara Gali Kasala Cher Road. (U/C Nagri Bala)	10th DRAC 26-03-07	97.000	97.000	14.550	82.450	-	82.450	
38	Karlan Seri Road (Old Bagnotar Road) (U/C Bagnotar)	10th DRAC 26-03-07	37.000	37.000	5.550	31.450	-	31.450	
39	Sarbana Beerangali Road.(U/C Sarbana & Beerangali)	10th DRAC 26-03-07	7.500	7.500	1.125	6.375	-	6.375	
40	Bara Hotar Malsa Road.(U/C Sarbana Beerangali)	10th DRAC 26-03-07	51.670	31.000	7.751	43.919	-	43.919	
41	Bara Gali Summander Katha Road.(U/C Nagri Bala)	10th DRAC 26-03-07	25.000	25.000	3.750	21.250	-	21.250	
42	Karlan Bagh Road.(U/C Bagnotar/Bagh)	10th DRAC 26-03-07	15.000	15.000	2.250	12.750	-	12.750	
43	Kuthiala Rich behn Road.(U/c Kuthiala)	10th DRAC 26-03-07	27.500	27.500	4.125	23.375	-	23.375	
44			33.600	33.600	16.800	16.800	-	16.800	

ANNUAL WORK PLAN 2007-08

Sector:

Roads

District Reconstruction Unit:

Abbottabad

Reconstruction Agency:

W & S Deptt: (PERRA) Abbottabad

S#	i. Name of the project ii. Location	Approved by DRAC/PSC/SSC ERRA BOARD CDWP/ECNEC (Dates of approval & completion)	Estimated Cost		Estimated Expenditure Up to June, 2007, Total(F-Aid)	Allocation for 2007-08		
			Total	Foreign Aid(FEC)		Rupee	Foreign Exchange	Total
1	2	3	4	5	6	7	8	9
45	Qalandar Abad Tarnawai Road Khan)(U/C Banda Pir Khan	10th DRAC 26-03-07	20.560	20.560	3.084	17.476	-	17.476
46	Kanthalial to Marhais with ink to Chotri.(U/C Kukmang)	10th DRAC 26-03-07	15.000	15.000	2.250	12.750	-	12.750
47	Banda Ali Khan Karak Maira up to Maira Muzaffer link Road.	10th DRAC 26-03-07	10.280	6.000	1.542	8.738	-	8.738
48	Dharman Ghora Bazgran Road.	10th DRAC 26-03-07	12.000	12.000	1.800	10.200	-	10.200
49	Havellian Panjigrian Sareela Road.(U/C Jhangra)	10th DRAC 26-03-07	15.000	15.000	2.250	12.750	-	12.750
50	Soban Gali Banjgali (U/C Chammad)	10th DRAC 26-03-07	6.000	6.000	0.900	5.100	-	5.100
Sub Total (ii)			864.610	784.160	154.602	710.008	0.000	710.008
iii. CATEGORY-I (ERRA FUNDED)								
51	Serai Naimat Khan Road (U/C Havellian Ueban)	-	8.000	-	2.400	5.600	-	5.600
52	Dhobian Barseen Road. (U/C Chamhad))	-	3.000	-	0.900	2.100	-	2.100
53	Takia Kholora Pindgali Beer Road with link to Bandi Nikra Road.	-	10.000	-	3.000	7.000	-	7.000
54	Sobangali-Banasri with link to Kassaki.(U/C Chamhad)	-	10.000	-	3.000	7.000	-	7.000
55	Harno Sarbana Road.(U/C Sarbana)	-	15.000	-	4.500	10.500	-	10.500
56	Gahia Kutli Road.(U/C Namli Maira)	-	4.000	-	1.200	2.800	-	2.800
57	Narrian Aziz Bang i/c with link to Maira Aziz Bang.(U/C Sarbana)	-	3.000	-	0.900	2.100	-	2.100
58	Beerangali to Banjgali (U/C Beerangali)	-	1.500	-	0.450	1.050	-	1.050
59	Malsa Jandar Bari Road.(U/C Phalkot)	-	4.000	-	1.200	2.800	-	2.800
60	Harrian to Dakh Doga Road.	-	6.000	-	1.800	4.200	-	4.200
61	Kundla Pasala Road. (U/C Nathiagali)	-	3.000	-	0.900	2.100	-	2.100
62	Cher Hill Karmati Road.(U/C Dewal Menal 0	10th DRAC 27-03-2007	12.000	-	3.600	8.400	-	8.400
63	Mohri Badbhen Chando Maira Road.(U/C Nara)	10th DRAC 27-03-2007	6.000	-	1.800	4.200	-	4.200
64	Batanhija to Kasoorian Road.(U/C Nara)	-	3.000	-	0.900	2.100	-	2.100
65	Nelotha to Batala Road.(U/C Gari Phulgran)	10th DRAC 27-03-2007	3.000	-	0.900	2.100	-	2.100
66	Hirlian to Kanger Hotar Road.(U/C Nara)	10th DRAC 27-03-2007	3.000	-	0.900	2.100	-	2.100

ANNUAL WORK PLAN 2007-08

Sector:

Roads

District Reconstruction Unit:

Abbottabad

Reconstruction Agency:

W & S Deptt: (PERRA) Abbottabad

S#	i. Name of the project ii. Location	Approved by DRAC/PSC/SSC ERRA BOARD CDWP/ECNEC (Dates of approval & completion)	Estimated Cost		Estimated Expenditure Up to June, 2007, Total(F-Aid)	Allocation for 2007-08		
			Total	Foreign Aid(FEC)		Rupee	Foreign Exchange	
1	2	3	4	5	6	7	8	9
67	Sajikot Ghora Road.(U/C Nara)	10th DRAC 27-03-2007	21.000	-	6.300	14.700	-	14.700
68	Maira Rehmat Khan Road. U/C Kuthwal	-	6.000	-	1.800	4.200	-	4.200
69	Maseena Batangi Road.(U/C Pattan Kalan)	-	6.000	-	1.800	4.200	-	4.200
70	Namligali Khan Kalan Aliabad i/c link Road to Moolia. (U/C Bakot/Nammal)	-	10.000	-	3.000	7.000	-	7.000
71	Lora Malmoola Road.(U/C Lora)	-	5.000	-	1.500	3.500	-	3.500
72	Maira Roomal Road.(U/C Seer Sharqi)	-	4.000	-	1.200	2.800	-	2.800
73	Nowshera Tupla Road.(U/C Tajwal)	-	10.000	-	3.000	7.000	-	7.000
74	Jalsi Tupla Road.(U/C Tajwal)	-	5.000	-	1.500	3.500	-	3.500
75	Sajjangali Bagan Road.(U/C Nathiagali)	-	8.000	-	2.400	5.600	-	5.600
76	Tajwal to Danna Road.(U/C Tajwal)	-	4.000	-	1.200	2.800	-	2.800
77	Khoi Dawata Road.	-	3.000	-	0.900	2.100	-	2.100
78	Salhad Forest Barrier to Kassaaki Kalan via Shah De Gali with Link to Dhobian Sohalan.	5th DRAC 7-08-2006	60.000	-	18.000	42.000	-	42.000
79	Sheikhubandi link Road..(U/C Sheikhubandi)	10th DRAC 26-03-07	9.000	-	2.000	7.000	-	7.000
80	Mirpur Musazai Road.(U/C Meer Pur)	10th DRAC 26-03-07	2.500	-	1.000	1.500	-	1.500
81	Musa-De-Hati to Shamer-Da-Tarhana via Islamkot Road.(U/C Meer Pur)	10th DRAC 26-03-07	20.000	-	3.500	16.500	-	16.500
82	Maira Mandroach Dana Road. (U/C Kakul)	10th DRAC 26-03-07	30.000	-	5.000	25.000	-	25.000
83	Narian link Road.(U/C Sheikhubandi)	10th DRAC 26-03-07	30.000	-	5.000	25.000	-	25.000
84	Dheri Choona Kari Road.(Nawan Sher)	10th DRAC 26-03-07	5.000	-	2.500	2.500	-	2.500
85	Thanda Chowwa Illyasi Road.(U/C Nawan Sher)	10th DRAC 26-03-07	2.500	-	1.000	1.500	-	1.500
	Sub Total (B)	-	335.500	0.000	90.950	244.550	0.000	244.550
iv	German Debt Swat							
86	Lassan Thakral to Kanger Payeen via Chamati.(U/C Sherwan)	10th DRAC 26-03-07	9.000	9.000	0.000	9.000	-	9.000
87	Ghambeer Rakhala Road.(U/C Lora)	10th DRAC 26-03-07	4.500	4.500	0.000	4.500	-	4.500
88	Dewal Manal to Nara Chack Hall Road.(U/C Dewal Manal)	10th DRAC 26-03-07	15.000	15.000	0.000	10.000	-	10.000

ANNUAL WORK PLAN 2007-08

Sector:

Roads

District Reconstruction Unit:

Abbottabad

Reconstruction Agency:

W&S Deptt: (PERRA) Abbottabad

S#	i. Name of the project ii. Location	Approved by DRAC/PSC/SSC ERRA BOARD CDWP/ECNEC (Dates of approval & completion)	Estimated Cost		Estimated Expenditure Up to June, 2007, Total(F-Aid)	Allocation for 2007-08		
			Total	Foreign Aid(FEC)		Rupee	Foreign Exchange	Total
1	2	3	4	5	6	7	8	9
89	Rajoya Road.(U/C G.Phulgran/Dewal)	10th DRAC 26-03-07	8,000	8,000	0.000	8,000	-	8,000
90	Danna Road.(U/C Kuthwal)	10th DRAC 26-03-07	22,000	22,000	0.000	10,000	-	10,000
91	Pather Gali Boi via Rialli Rankot Road.(U/C Kukmang)	10th DRAC 26-03-07	40,000	40,000	0.000	20,000	-	20,000
	Sub Total		98,500	98,500	0.000	61,500		61,500
	Total On-Going		1731,632	1140,132	396,791	1297,841	0.000	1297,841
B. New Schemes								
i. Category-IV (DFID Funded).								
1	Construction of sub structure and approach road of Belly Bridge at Boi Batangi	9th DRAC 27-01-2007	6,179	6,179	0.000	6,179		6,179
2	Construction of sub structure and approach road of Belly Bridge at Sawargali Lahoor	9th DRAC 27-01-2007	5,354	5,354	0.000	5,354		5,354
	SUB TOTAL		11,533	11,533	0	11,533	0	11,533
ii. German Debt Swap								
3	Kanair Kass to Kohala.(U/C Berote)	10th DRAC 26-03-07	22,000	22,000	0.000	10,000	-	10,000
4	Bridge on Thandini Pattan Khurd Road in KM-45 (U/C Pattan Khurd)	10th DRAC 26-03-07	37,000	37,000	0.000	20,000	-	20,000
5	Improvement & Black topping of Lahoor Kass to Bakote Mohra road	10th DRAC 26-03-07	90,000	90,000	0.000	45,000	0.000	45,000
6	Pattan Khurd Boi Road.(U/C Pattan Khurd)	10th DRAC 26-03-07	35,000	35,000	0.000	17,500	-	35,000
7	Seer Dheri to Boi Road(U/C Boi)	10th DRAC 26-03-07	40,000	40,000	0.000	20,000	-	20,000
8	Rehabilitation & Repair Work on Bridge on Kohala Moolia Road	10th DRAC 26-03-07	18,000	18,000	0.000	10,000	0.000	10,000
9	Rehabilitation, Repair and Black Topping of Terhana Maliar Road	10th DRAC 26-03-07	1,500	1,500	0.000	1,500	0.000	1,500
10	Rehabilitation, Repair and Black Topping of Banda Batanga via Banda Qazi Road.	10th DRAC 26-03-07	9,000	9,000	0.000	9,000	0.000	9,000
11	Rehabilitation, Repair and Black Topping of Construction of Bridge on Namli Maira Nathiagali road	10th DRAC 26-03-07	9,000	9,000	0.000	9,000	0.000	9,000
12	Danna Goreeni Road (U/C Goreeni)	10th DRAC 26-03-07	40,000	40,000	0.000	20,000	-	20,000
	Total (German Funded)		301,500	301,500	0.000	162,000	0.000	179,500

ANNUAL WORK PLAN 2007-08

Sector:

Roads

District Reconstruction Unit:

Abbottabad

Reconstruction Agency:

W&S Deptt: (PERRA)Abbottabad

S#	i. Name of the project ii. Location	Approved by DRAC/PSC/SSC ERRA BOARD CDWP/ECNEC (Dates of approval & completion)	Estimated Cost		Estimated Expenditure Up to June, 2007, Total(F-Aid)	Allocation for 2007-08		
			Total	Foreign Aid(FEC)		Rupee	Foreign Exchange	Total
1	2	3	4	5	6	7	8	9
D. New Unapproved Schemes								
13	Maira Rehmat Khan-Hariala Road.(U/C Kuthwal/Kukmang)	-	22,000	-	-	22,000	-	22,000
14	Barrian Kalkot Road(U/C Goreeni) .	-	5,000	-	-	5,000	-	5,000
15	Moolia Kalaban Road.(U/C Nammal)	-	10,000	-	-	10,000	-	10,000
16	Abbottabad link Road.(U/C Kehal Urban)	-	8,500	-	-	8,500	-	8,500
17	Circular Road.(U/C Kehal Urban)	-	2,500	-	-	2,500	-	2,500
18	Commissioner Road (U/C City Urban) .	-	0,500	-	-	0,500	-	0,500
19	Old Deputy Commissioner Road(U/C City Urban) .	-	0,380	-	-	0,380	-	0,380
20	District Court Road.(U/C City Urban)	-	0,350	-	-	0,350	-	0,350
21	Old XEN Building Office Road(U/C City Urban)	-	0,330	-	-	0,330	-	0,330
22	Old XEN Highway Office Road(U/C City Urban)	-	0,200	-	-	0,200	-	0,200
23	Frontior House Road.(U/C City Urban)	-	2,500	-	-	2,500	-	2,500
24	Guest House Road.(U/C City Urban)	-	0,300	-	-	0,300	-	0,300
25	Kutwali Road.(U/C City Urban)	-	2,500	-	-	2,500	-	2,500
26	Police link Road.(U/C City Urban)	-	0,330	-	-	0,330	-	0,330
27	Session House Road.(U/C City Urban)	-	1,500	-	-	1,500	-	1,500
28	Old Circle Office Road.(U/C City Urban)	-	0,500	-	-	0,500	-	0,500
29	Jab Jhangi Road.(U/C Jhangi)	-	2,300	-	-	2,300	-	2,300
30	PMA to Nawansher Road.(U/C Kakul)	-	3,300	-	-	3,300	-	3,300
31	Nawansher link Road.(U/C Nawwan Sher)	-	1,500	-	-	1,500	-	1,500
32	Jinnah Road.(U/C City Urban)	-	2,300	-	-	2,300	-	2,300
33	DIG House Road. (U/C City Urban)	-	0,300	-	-	0,300	-	0,300
34	KKH to Karak Maira via Maira MuzaffarRoad. (U/C Bakdheri)	-	10,000	-	-	10,000	-	10,000
35	Majuhian Kaas Pattan Road (U/C Pattan Kalan)	-	28,000	-	-	28,000	-	28,000
36	Beer to Nabi Banda(U/C Meer Pur).	-	15,000	-	-	15,000	-	15,000
37	Salhad Dara Road.(U/C Salhad)	-	15,000	-	-	15,000	-	15,000
38	Mirpur to Kakul via Maira Road.(U/C Meer Pur)	-	20,000	-	-	20,000	-	20,000
39	Kalidar Road.(U/C Banda Pir Khan)	-	25,000	-	-	25,000	-	25,000

ANNUAL WORK PLAN 2007-08

Sector: Roads
District Reconstruction Unit: Abbottabad
Reconstruction Agency: W&S Deptt: (PERRA)Abbottabad

S#	i. Name of the project ii. Location	Approved by DRAC/PSC/SSC ERRA BOARD CDWP/ECNEC (Dates of approval & completion)	Estimated Cost		Estimated Expenditure Up to June, 2007, Total(F-Aid)	Allocation for 2007-08		
			Total	Foreign Aid(FEC)		Rupee	Foreign Exchange	Total
1	2	3	4	5	6	7	8	9
40	Mian-De-Sairi KKH to Mohri Rd.(U/C Meer Pur)	-	12,500	-	-	12,500	-	12,500
41	KKH to Lalazar Colony Rd. (U/C Meer Pur)	-	3,000	-	-	3,000	-	3,000
42	Lambi Dheri Road.(U/C Jhangi)	-	3,000	-	-	3,000	-	3,000
43	Kakul Malach Road(U/C Kakul)	-	5,000	-	-	5,000	-	5,000
44	Qalandar Abad Sajikot Road.(U/C Baldheri)	-	6,000	-	-	6,000	-	6,000
45	Zaffar Market to Jabber via Tarhana Gharbian and Tarhana Bala Road.(U/C Meer Pur)	-	42,000	-	-	42,000	-	42,000
46	Qalandar Abad to Gojri with link to Mast Maira. (U/C Baldheri)	-	16,000	-	-	16,000	-	16,000
47	Mangal to Rian-De-Maira with link to Pathi Dam Maira via Nikaa Pani Road.(U/C Baldheri)	-	25,000	-	-	25,000	-	25,000
48	Frontior House to Boi-De-Gali via Dobather Road. (U/C Jhangi)	-	30,000	-	-	30,000	-	30,000
49	Thathi Ahmad Khan to Maira Nechan with link to Kharpar.	-	30,000	-	-	30,000	-	30,000
50	Mangal to Hall Maira Zarian Road. (U/C Baldheri)	-	35,000	-	-	35,000	-	35,000
51	Narrian Road. (U/C Sheikhubandi)	-	7,500	-	-	7,500	-	7,500
Sub Total(New Unapproved Scheme)			395,090	0,000	0,000	395,090	0,000	395,090
Total New			708,123	313,033	0,000	568,623	0,000	586,123
G Total (On-Going + New)			2,439,755	1,453,165	396,791	1,866,464	0,000	1,883,964

(ANNUAL WORK PLAN 2007-08)

Sector: Road/Bridge
 District Reconstruction Unit: Abbottabad
 Reconstruction Agency: TMA Abbottabad

S#	i. Name of the project ii. Location	Approved by RAC/PSC/SSC ERRA BOARD CDWP/ECNEC Dates of approval & completion)	Estimated cost		Estimated Expenditure Up to June, 2007, Total (F-Aid)	Allocation for 2007-08			
			Total	Foreign Aid (FEC)		Reupee	Foreign Exchange	Total	
1	2	3	4	5	6	7	8	9	
A. NEW (Approved) Roads									
1	Improvement/BTR Mohar Khurd u/c Sarbana	DRAC 26-9-2006.	9.000	-		5.000		5.000	
2	Improvement/BTR Bandi Dhundan to Samesar Road u/c Banda Pir Khan	do	9.000	-		5.000		5.000	
3	Improvement/BTR Boi to Tori Road (P-I) u/c Boi	do	12.000	-		8.000		8.000	
4	Improvement/BTR Gali Banian to Danna Road (P-I) u/c Kuthawal	do	6.000	-		3.000		3.000	
5	Improvement/BTR Hill Maira Road (P-I) u/c Baddehri	do	6.000	-		3.000		3.000	
6	Rahabilitation of Shingle Road Kulian Bridge to Nammal u/c Nammal	do	7.000	-		4.000		4.000	
7	Rahabilitation of Shingle Road Nammal to Shalan Leeran Road u/c Nammal	do	5.000	-		2.000		2.000	
8	Rahabilitation of Shingle Road Gandala to Patar Gali u/c Kukmong	do	3.000	-		3.000		3.000	
9	Rahabilitation of Shingle Road Batangi to Masina Road u/c Kukmong	do	3.000	-		3.000		3.000	
10	Rahabilitation of Shingle Road Molia to Ali Abad Road (P-I) u/c Bakot	do	5.000	-		5.000		5.000	

(ANNUAL WORK PLAN 2007-08)

Sector:

Road/Bridge

District Reconstruction Unit:

Abbottabad

Reconstruction Agency:

TMA Abbottabad

S#	i. Name of the project ii. Location	Approved by RAC/PSC/SSC ERRA BOARD CDWP/ECNEC Dates of approval & completion)	Estimated cost		Estimated Expenditure Up to June, 2007, Total (F-Aid)	Allocation for 2007-08		
			Total	Foreign Aid (FEC)		Reupce	Foreign Exchange	Total
1	2	3	4	5	6	7	8	9
11	Rehabilitaion of Shingle Road Dakh doga to Paja BeerianGali u/c BerianGali	do	1.500	-		1.500		1.500
12	Rehabilitaion of Shingle Road Harrian to Dakh Doga u/c BerianGali	do	3.000	-		3.000		3.000
13	Rehabilitaion of Shingle Road Kutli Road Phulkot u/c Phalkot	do	3.000	-		3.000		3.000
14	Rehabilitaion of Shingle Road Phalkot village Road (P-I) u/c Phalkot	do	3.000	-		3.000		3.000
15	Rehabilitaion of Shingle Road Gandlania road (P-I) u/c Banda Pir Khan	do	3.000	-		3.000		3.000
16	Improvement/BTR Berot to Julial Berot (P-I) u/c Berot	do	9.000			5.000		5.000
17	Improvement/BTR bakot village Road (P-I) u/c Bakot	do	9.000			5.000		5.000
18	Improvement/BTR Dabban Dalola (P-I) u/c Dalola	do	12.000			6.000		6.000
19	BTR Kakul to Balolia Road (P-I) u/c Kakul	do	12.000			6.000		6.000
20	BTR Masjid-e-Khazra, Anwar-e-Madina u/c Nawanshehr	do	6.000			3.000		3.000
21	BTR Takia To Banda Said Khan (P-I) u/c Dhamtaur	do	9.000			5.000		5.000

(ANNUAL WORK PLAN 2007-08)

Sector: Road/Bridge
 District Reconstruction Unit: Abbottabad
 Reconstruction Agency: TMA Abbottabad

S#	i. Name of the project ii. Location	Approved by RAC/PSC/SSC ERRA BOARD CDWP/ECNEC Dates of approval & completion)	Estimated cost		Estimated Expenditure Up to June, 2007, Total (F-Aid)	Allocation for 2007-08		
			Total	Foreign Aid (FEC)		Reepee	Foreign Exchange	Total
1	2	3	4	5	6	7	8	9
22	BTR Link road Astabal to Mirpur Maira u/c Mirpur	do	7.500			4.500		4.500
23	PCC Road Masjid-e-Khazra to H/O Mr. Riaz Nawanshehr u/c Nawanshehr	do	0.800			0.800		0.800
24	Improvement Construction of BTR Thanda Choa Nawashehr Road u/c Nawanshehr	do	6.000			3.000		3.000
25	Improvement/BTR Thanda Maira Road u/c Salhad	do	3.000			3.000		3.000
26	improvement/BTR Gari Pana to Stadium u/c Nawanshehr	do	2.250			2.250		2.250
		Sub Total	155.050			98.050		98.050
B New (un-approved) Bridges/ Culverts								
1	Bridge over Nala Banda Khair Ali Kan U/ Jhangi	-	0.800		-	0.800	-	0.800
2	1 No. Culvert Moolia to Aliabad road U/C Moolia	-	0.150		-	0.150	-	0.150
3	10 No. Culvert Berote to Julial Road U/C Berote	-	2.750		-	2.750	-	2.750
4	5 No. Culverts Link Dalola Road u/c Dalola	-	1.370		-	1.370	-	1.370
5	4 No. Culverts Batangi Mascena Road u/c Kukmong	-	1.100		-	1.100	-	1.100

(ANNUAL WORK PLAN 2007-08)

Sector: Road/Bridge
 District Reconstruction Unit: Abbottabad
 Reconstruction Agency: TMA Abbottabad

S#	i. Name of the project ii. Location	Approved by RAC/PSC/SSC ERRA BOARD CDWP/ECNEC Dates of approval & completion)	Estimated cost		Estimated Expenditure Up to June, 2007, Total (F-Aid)	Allocation for 2007-08		
			Total	Foreign Aid (FEC)		Rupee	Foreign Exchange	Total
1	2	3	4	5	6	7	8	9
6	6 No. Culverts Dobathar Boi de Gali Road u/c jhangi	-	1.650		-	1.650	-	1.650
	Sub Total		7.820			7.820		7.820
	Grand Total (A + B)		162.870			105.870		105.870

ANNUAL WORK PLAN 2007-08

Sector:

Road

District Reconstruction Unit:

Abbottabad

Reconstruction Agency:

TMA Havelian

S #	i-Name of the Project ii- Location	2	3		4		5	6	7		8	9
			Approved by DRAC/PSC/SSC ERRA BOARD CDWP/ECNEC (Dates of approval & completion)		Total	Foreign aid (FEC)			Estimated expenditure upto June 2007 (total F.Aid)	Rupees		
1												
New Unapproved Schemes												
Black Top Roads												
1.	Nagri Totial chanali				2.500	-	-	-	2.500	-	-	2.500
2.	Narhoter khoian Road				3.000	-	-	-	3.000	-	-	3.000
3.	Mari Peer kot Road				1.500	-	-	-	1.500	-	-	1.500
4.	Saji kot to Gali Road				1.000	-	-	-	1.000	-	-	1.000
5.	Chapri to Manjia Road				1.500	-	-	-	1.500	-	-	1.500
6.	Karwala Baseer Road				1.600	-	-	-	1.600	-	-	1.600
7.	Hawarian to Gandawan Road				1.300	-	-	-	1.300	-	-	1.300
8.	Barrian Chattala Road				1.500	-	-	-	1.500	-	-	1.500
9.	Langrial Dubran Road				4.000	-	-	-	4.000	-	-	4.000
10.	Kari Bulkhu Road				1.000	-	-	-	1.000	-	-	1.000
11.	Malmoola Batkanala Road Blasting				5.000	-	-	-	5.000	-	-	5.000
12.	Chanali Dhamyal katha Road				2.500	-	-	-	2.500	-	-	2.500
13.	Lora Ghari Road				1.500	-	-	-	1.500	-	-	1.500
14.	Malmoola Seri Road				1.500	-	-	-	1.500	-	-	1.500
15.	Jhangri Rakhala Road				2.500	-	-	-	2.500	-	-	2.500
16.	Lower Barrian Hawari Dhokan Road				1.250	-	-	-	1.250	-	-	1.250
17.	Kalkot Goreeni Bawar Road				1.500	-	-	-	1.500	-	-	1.500
18.	Nagri Totial Thuba Road via Batangi				2.500	-	-	-	2.500	-	-	2.500
19.	Narhoter chathrial via Pathani Road				1.500	-	-	-	1.500	-	-	1.500

ANNUAL WORK PLAN 2007-08

Sector:

Road

District Reconstruction Unit:

Abbottabad

Reconstruction Agency:

TMA Havelian

S #	i-Name of the Project ii- Location	Approved by DRAC/PSC/SSC ERRA BOARD CDWP/ECNEC (Dates of approval & completion)	Estimated cost		Estimated expenditure upto June 2007 (total F.Aid)	Allocation for 2007-08			
			Total	Foreign aid (FEC)		Rupees	Foreign exchange	Total	
1		2	4	5	6	7	8	9	
20.	Leeran hajian to Samoli Goreeni	3	1.000	-	-	1.000	-	1.000	
21.	Jawa Link Road		0.750	-	-	0.750	-	0.750	
22.	Rahi Chankot Toad		1.500	-	-	1.500	-	1.500	
23.	Karhaki Road		1.750	-	-	1.750	-	1.750	
24.	Hajia Gali kiala Road		1.500	-	-	1.500	-	1.500	
	TOTAL		45.150			45.150		45.150	
Shingle Road									
1	Langrial Dana Road		3.000	-	-	3.000	-	3.000	
2	Cheir Niloth road		1.500	-	-	1.500	-	1.500	
3	Cheir Hari Khayter Road		1.300	-	-	1.300	-	1.300	
4	Mari Nagri Totial Road		1.500	-	-	1.500	-	1.500	
5	Bandi to Dhakan Passer Road		2.000	-	-	2.000	-	2.000	
6	Jandala road		2.000	-	-	2.000	-	2.000	
7	Mohair Buddhen to Chamnaka Road		1.500	-	-	1.500	-	1.500	
8	Maira Romal Leeran Road		0.750	-	-	0.750	-	0.750	
9	Maira Hasnal Chowain Road		1.500	-	-	1.500	-	1.500	
10	Masah Gojri Kiala Road		1.250	-	-	1.250	-	1.250	
11	Gali Batagan Road		0.750	-	-	0.750	-	0.750	
12	Langrial Road		0.500	-	-	0.500	-	0.500	
13	Nagri Chanali road		2.500	-	-	2.500	-	2.500	
	Total		20.050			20.050		20.050	
	Grand Total		65.200			65.200		65.200	

(ANNUAL WORK PLAN 2007-08)

Governance Building

Sector:

Abbottabad

District Reconstruction Unit:

W & S Deptt. Abbottabad

Reconstruction Agency:

S#	i. Name of the project ii. Location	Location	Approved by DRAC/PSC/SSC ERRA BOARD CDWP/ECNEC (Dates of approval & completion)	Estimated Cost		Estimated Expenditure Up to June, 2007, Total(F--Aid)	Allocation for 2007-08		
				Total	Foreign Aid(FEC)		Rupee	Foreign Exchange	Total
1	2	3	4	5	6	7	8	9	
A) On-Going Project									
1	PHC Abbottabad	Abbottabad City	DRAC 5th Meeting 27 Aug, 2006	80.000	-	25.000	30.000	-	30.000
2	Police Line (Admn Block)	Abbottabad City	do	81.177	-	25.000	25.000	-	25.000
3	DCO Residence.	Abbottabad City	do	7.082	-	3.000	4.082	-	4.082
4	DRO Office/Court Room.	Abbottabad City	do	15.312	-	3.000	8.000	-	8.000
5	Central Jail (Admn/Residential Block), B/Wall)	Abbottabad City	do	74.763	-	20.763	25.000	-	25.000
6	Police Line (Res. Block)	Abbottabad City	do	82.370	-	23.000	25.000	-	25.000
7	Naib Nazim Office (Old DC Office)	Abbottabad City	DRAC 7th Meeting 23rd Nov, 2006	6.053	-	2.000	4.053	-	4.053
8	District Account Office	Abbottabad City	do	9.000	-	4.000	5.000	-	5.000
9	Maal Khana	Abbottabad City	do	1.232	-	1.232	0.000	-	0.000
10	Mohafiz Khana	Abbottabad City	do	5.200	-	3.200	2.000	-	2.000
11	Magistrate Colony Type-III (8 Nos)	Abbottabad City	do	8.368	-	3.000	5.368	-	5.368
12	Magistrate Colony Type IV (6 Nos)	Abbottabad City	do	7.426	-	3.000	4.426	-	4.426
13	Magistrate Colony Type VI (16 Nos)	Abbottabad City	do	3.723	-	3.723	0.000	-	0.000
14	Boundary Wall of Mir Pur Officer Colony Type III (16 Nos) Only	Mirpur	do	6.750	-	6.750	0.000	-	0.000
15	Porch and Main Gate of Mir Pur Officer Colony Type III (16 No).	Mirpur	do	2.904	-	2.904	0.000	-	0.000
16	Magistrate Colony Type-III (8 Nos)	Abbottabad City	do	7.843	-	3.000	4.843	-	4.843
17	Magistrate Colony Type IV (6 Nos)	Abbottabad City	do	2.320	-	2.320	0.000	-	0.000

(ANNUAL WORK PLAN 2007-08)

Sector:

Governance Building

District Reconstruction Unit:

Abbottabad

Reconstruction Agency:

W & S Deptt. Abbottabad

S#	i. Name of the project ii. Location	Location	Approved by DRAC/PSC/SSC ERRA BOARD CDWP/ECNEC (Dates & completion)	Estimated Cost		Estimated Up Expenditure Up to June, 2007, Total(F-Aid)	Allocation for 2007-08		
				Total	Foreign Aid(FEC)		Rupee	Foreign Exchange	Total
1	2	3	4	5	6	7	8	9	
18	Type V (24 Nos) Magistrate Colony	Abbottabad City	do	6.789	-	3.000	3.789	-	3.789
19	Magistrate Colony Type VI (16 Nos)	Abbottabad City	do	1.164	-	1.164	0.000	-	0.000
20	Mir Pur Officer Colony Type IV Quarter (15 Nos)	Mirpur	do	0.671	-	0.671	0.000	-	0.000
21	Bachelor (Hostel Suit No 16) Mir Pur Officer Colony	Mirpur	do	0.700	-	0.700	0.000	-	0.000
22	Quarter 12 Nos C&W Colony Near DHQ	Abbottabad City	do	0.627	-	0.627	0.000	-	0.000
23	Quarters 5 NOs C&W Colony Iqbal Road.	Abbottabad City	do	0.170	-	0.170	0.000	-	0.000
24	District Secretariat (Old Palace Hotel)	Abbottabad City	do	0.840	-	0.840	0.000	-	0.000
25	C&W Store /Office	Abbottabad City	do	1.127	-	1.127	0.000	-	0.000
26	Dar ul Aman Abbottabad	Abbottabad City	do	4.778	-	2.000	2.778	-	2.778
27	Blind institute	Abbottabad City	do	1.604	-	1.604	0.000	-	0.000
28	Police Station Lora	Lora	do	15.872	-	6.000	9.872	-	9.872
29	Police Station Bakote	Bakote	do	15.872	-	6.000	9.872	-	9.872
30	Police Station Bagnotar	Namli Maira	do	21.280	-	6.000	10.000	-	10.000
31	District Courts A.Abad	Abbottabad City	do	19.305	-	9.000	10.305	-	10.305
32	District Courts A.Abad	Abbottabad City	do	6.780	-	6.780	0.000	-	0.000
33	Police Station Sherwan	Sherwan	do	21.280	-	6.000	10.000	-	10.000

(ANNUAL WORK PLAN 2007-08)

Sector: Governance Building

District Reconstruction Unit: Abbottabad

Reconstruction Agency: W & S Deptt. Abbottabad

S#	i. Name of the project ii. Location	Location	Approved by DRAC/PSC/SSC ERRA BOARD CDWP/ECNEC (Dates of approval & completion)	Estimated Cost		Estimated Expenditure Up to June, 2007, Total(F-Aid)	Allocation for 2007-08		
				Total 4	Foreign Aid(FEC) 5		Rupee 7	Foreign Exchange 8	Total 9
1	2		3	4	5	6	7	8	9
34	Police Station Donga Gali	Donga Gali	do	3.400	-	3.400	0.000	-	0.000
	Total (On-Going Projects)			523.782		189,975	199,388		199,388
B). New Projects									
1	Reconstruction of damaged portion of Governor's House Nathagali	Nathiagali	DRAC 26/03/2007	5.265	-	-	2.6325	-	2.6325
2	Reconstruction of police station Cantt. Board	Cantt Abbottabad	-	43.416			21.708		21.708
	Sub Total (New Projects)			48.681			24.341		24.34
	Grand Total (A + B)			572.463			223.729		413.704

ANNUAL WORK PLAN 2007-08

IRRIGATION
ABBOTTABAD
IRRIGATION DEPTT. ABBOTTABAD

SECTOR:
DISTRICT RECONSTRUCTION UNIT:
RECONSTRUCTION AGENCY:

S#	(i). Name of the Project (ii). Location	Location	Approved By DRAC/PSC/SSC ERRA Board CDWP/ECNEC Dates of Approval & Completion	Estimated Cost		Estimated Expenditure up to June 2007 Total (F.Aid)	Allocation for 2007-08		
				Total	Foreign Aid (FEC)		Rupee	Foreign Exchange	Total
1	2		3	4	5	6	7	8	9
A) On Going									
a Building Component.									
1		Jhangi	DRAC 23 Nov, 2006	1.400	-		1.400	-	1.400
2	Repair/constn: of damaged works of Irrigation colony, Rest House and office	do	do	2.071	-		2.071	-	2.071
Sub Total (a)				3.471			3.471		3.471
b Civil Channels									
1	Rehabilitation of Irrigation Civil Channel Sanal	Sanal	DRAC 7th Meeting 23 Nov, 2006	1.500	-		1.500	-	1.500
2	Rehabilitation of Irrigation Civil Channel Molia Bakot	Boket	do	5.100	-		3.500	-	3.500
3	Rehabilitation of Irrigation Civil Channel Nambal	Nammal	do	1.800	-		1.500	-	1.500
4	Rehabilitation of Irrigation Civil Channel Beer	Beer	do	1.500	-		1.000	-	1.000
5	Rehabilitation of Irrigation Civil Channel Chabgran	Chabgran	do	4.500	-		3.000	-	3.000
6	Rehabilitation of Irrigation Civil Channel Seer Gharbi	Seer	do	3.300	-		2.000	-	2.000
7	Rehabilitation of Irrigation Civil Channel Bathian	Seer	do	3.000	-		1.500	-	1.500
8	Rehabilitation of Irrigation Civil Channel Chakhal	Chakhal	do	2.700	-		1.500	-	1.500
9	Rehabilitation of Irrigation Civil Channel Magri	Magri	do	5.400	-		2.500	-	2.500
10	Rehabilitation of Irrigation Civil Channel Kokal Barseen	Kokal Barseen	do	3.600	-		2.000	-	2.000
11	Rehabilitation of Irrigation Civil Channel Simliala	Simliala	do	3.000	-		1.500	-	1.500

ANNUAL WORK PLAN 2007-08

SECTOR: IRRIGATION
 DISTRICT RECONSTRUCTION UNIT: ABBOTTABAD
 RECONSTRUCTION AGENCY: IRRIGATION DEPTT. ABBOTTABAD

S#	i). Name of the Project ii). Location	Location	Approved By DRAC/PSC/SSC ERRA Board CDWP/ECNEC Dates of Approval & Completion.	Estimated Cost		Estimated Expenditure up to June 2007 Total (F-Aid)	Allocation for 2007-08		
				Total	Foreign Aid (FEC)		Rupee	Foreign Exchange	Total
1	2		3	4	5	6	7	8	9
12	Rehabilitation of Irrigation Civil Channel Band Saib Khan	Banda Saib Khan	do	3.300	-		2.000	-	2.000
13	Rehabilitation of Irrigation Civil Channel Gora baz Garan	Gora Baz Gran	do	4.500	-		2.000	-	2.000
14	Rehabilitation of Irrigation Civil Channel Kot Nali	Kot Nali	do	1.200	-		0.700	-	0.700
15	Rehabilitation of Irrigation Civil Channel Jogan	Jogan	do	1.800	-		0.761	-	0.761
16	Rehabilitation of Irrigation Civil Channel Ilyasi	Nawasher	do	2.100	-		1.000	-	1.000
17	Rehabilitation of Irrigation Civil Channel Chamba Sultanpur	Havelian	do	5.400	-		2.500	-	2.500
18	Rehabilitation of Irrigation Civil Channel Kalu Maira	Kalu Maira	do	3.500	-		2.000	-	2.000
19	Rehabilitation of Irrigation Civil Channel Kassaki/Burj	Kassaki/Burj	do	6.000	-		1.098	-	1.098
Sub Total (b)				63.200			33.559		33.559
c Flood Protection Works									
1	Rehab/Repair of Flood Protection Works Chamba	Havelian	DRAC 7th Meeting 23 Nov. 2006	4.000	-		4.000	-	4.000
2	Rehab/Repair of Flood Protection Works Havelian	Havelian	do	4.000	-		4.000	-	4.000
3	Rehab/Repair of Flood Protection Works Jangra Kashka	Jangra Kashka	do	5.500	-		5.500	-	5.500
4	Rehab/Repair of Flood Protection Works Hazeera Area	Hazeera	do	5.000	-		5.000	-	5.000
5	Rehab/Repair of Flood Protection Works Upper Salhad	Salhad	do	2.000	-		2.000	-	2.000
6	Rehab/Repair of Flood Protection Works Salhad	do	do	4.000	-		4.000	-	4.000
7	Rehab/Repair of Flood Protection Works Sian Da Katha	Sia Da Katha		1.000			1.000		1.000
Sub Total (c)				25.500			25.500		25.500
Sub Total New (a + b + c)				92.171			62.530		62.530
B) New Unapproved Schemes									
Narrian Summandar Khatta U/C Nagribala		Nagribala		4.000	-		4.000	-	4.000
Sub Total (B)				4.000			4.000		4.000

ANNUAL WORK PLAN 2007-08

IRRIGATION
ABBOTTABAD
IRRIGATION DEPTT. ABBOTTABAD

SECTOR:
DISTRICT RECONSTRUCTION UNIT:
RECONSTRUCTION AGENCY:

S#	i). Name of the Project ii). Location	Location	Approved By DRAC/PSC/SSC ERRA Board CDWP/ECNEC Dates of Approval & Completion	Estimated Cost		Estimated Expenditure up to June 2007 Total (F.Aid)	Allocation for 2007-08		
				Total	Foreign Aid (FEC)		Rupee	Foreign Exchange	Total
1	2		3	4	5	6	7	8	9
Gand Total(A + B)				96.171			66.530		

ANNUAL WORK PLAN 2007-08

Sector: Industries

District Reconstruction Unit: Abbottabad

Reconstruction Agency: NWFP Industry Department

S#	i. Name of the project ii. Location	Location	Approved by DRAC/PSC/SSC ERRA BOARD CDWP/ECNEC (Dates of approval & completion)	Estimated Cost		Estimated Expenditure Up to June, 2007, Total(F- Aid)	Allocation for 2007-08		
				Total	Foreign Aid(FEC)		Rupee	Foreign Exchange	Total
1	2		3	4	5	6	7	8	9
A) On going									
1	GPGCC Jhangi A. Abad	Jhangi	DRAC 7th Meeting 23 Nov, 2006	10.02	-	-	5.010	-	5.010
2	GCT A.Abad	Abbottabad	do	10.00	-	-	5.000	-	5.000
3	Distt. Transport Authority Office City	Abbottabad	do	10.06	-	-	5.030	-	5.030
4	GTVC (W) Sheikhuiband A.Abad	Sheikhuiband	do	45.00	-	-	22.500	-	22.500
5	GTVC (B) Nawanshehr A.Abad	Nawanshehr	do	2.00	-	-	1.000	-	1.000
Total				77.080			38.540		38.540

ANNUAL WORK PLAN 2007-08

Sector:

Agriculture

District Reconstruction Unit:

Abbottabad

Reconstruction Agency:

Agriculture Deptt. Abbottabad

S#	i. Name of the project ii. Location	Location	Approved by DRAC/PSC/SSC ERRA BOARD CDWP/ECNEC	Estimated Cost		Estimated Expenditure Up to June, 2007, Total (F-Aid)	Allocation for 2007-08		
				Total	Foreign Aid(FEC)		Rupee	Foreign Exchange	Total
1	2		5	4	5	6	7	8	9
A) On Going Project (Unapproved)									
1	Repair of Dist Agriculture Office/Executive Dist Office Agriculture and Residential Colony etc	Jhangi Atd	-	8.000	-	-	4.000	-	4.000
2	Consturcion of Offices, Nathiagali, Havelian, Lora & Residences	Havelian, Lora and Nathiagali	-	15.000	-	-	5.000	-	5.000
3	Consturcion of 24 No Office/Residences for field assistant. (U/C Level Agriculture Dept	District Atd	-	24.000	-	-	8.000	-	8.000
4	Soil conservation work; Spurs, Protection Bunds, Chek Dams and Developmet of Water	District Atd	-	7.700	-	-	4.000	-	4.000
5	Reconsrucion of watercourses and water storage tanks	District Atd	-	9.775	-	-	4	-	4
6	Reconst & Repair of Office Block	District Atd	-	0.610	-	-	0.610	-	0.610
7	Reconst & Repair of Vty: Hospital	District Atd	-	4.730	-	-	4.730	-	4.730

ANNUAL WORK PLAN 2007-08

Sector: Agriculture

District Reconstruction Unit: Abbottabad

Reconstruction Agency: Agriculture Deptt. Abbottabad

S#	i. Name of the project ii. Location	Location	Approved by DRAC/PSC/SSC ERRA BOARD CDWP/ECNEC	Estimated Cost		Estimated Expenditure Up to June, 2007, Total (F-Aid)	Allocation for 2007-08		
				Total	Foreign Aid(FEC)		Rupee	Foreign Exchange	Total
1	2		3	4	5	6	7	8	9
8	Reconst & Repair of Camp Office		-	1.990	-	-	1.990	-	1.990
9	Reconst & Repair of Vety: Hospital Havelian	Havelian	-	6.000	-	-	6.000	-	6.000
10	Reconst & Repair of Vety: Hospital Lora	Lora	-	6.000	-	-	6.000	-	6.000
11	Reconst & Repair of Vety: Hospital Bakote	Bakote	-	6.080	-	-	6.080	-	6.080
12	Reconst & Repair of Vety: Hospital Sherwan	Sherwan	-	6.000	-	-	6.000	-	6.000
13	Reconst & Repair of Vety Dispensary KalaBagh	Nathiagali	-	6.000	-	-	6.000	-	6.000
14	Reconst & Repair of Govt: Poultry Farm Mandian	Jhangi	-	4.800	-	-	4.800	-	4.800
				Total (On Going)	106.685		67.210		67.210

ANNUAL WORK PLAN 2007-08

Forestry
Abbottabad

Sector:

District Reconstruction Unit:

Abbottabad

Reconstruction Agency: NWFP Forest Department

S#	i. Name of the project ii. Location	Location	Approved by DRAC/PSC/SSC ERRA BOARD CDWP/ECNEC (Dates of approval & completion)	Estimated Cost		Estimated Expenditure Up to June, 2007, Total(F-Aid)	Allocation for 2007-08		
				Total	Foreign Aid(FEC)		Rupee	Foreign Exchange	Total
1	2	3	4	5	6	7	8	9	
A) On going									
1	Reconstruction and repair of damaged buildings of NWFP Forest Department in District	Abbottabad	6th DRAC meeting 29, Sep 2006	85.723	–		55.301	–	55.301
2	Reconstruction and repair of damaged buildings of NWFP Wildlife Department in District Abbottabad	Abbottabad	DRAC 27, Sep 2006	5.138	–	–	5.138	–	5.138
				90.861			60.439		60.439

ANNUAL WORK PLAN 2007-08

SECTOR: Food
 DISTRICT RECONSTRUCTION UNIT: ABBOTTABAD
 RECONSTRUCTION AGENCY: ERRRA

S#	i. Name of the project ii. Location	Approved by DRAC/PSC/SSC ERRA BOARD CDWP/ECNEC (Dates of approval & completion)	Estimated Cost		Estimated Expenditure Up to June, 2007, Total(F- Aid)	Allocation for 2007-08		
			Total	Foreign Aid(FEC)		Rupee	Foreign Exchange	Total
1	2	3	4	5	6	7	8	9
On going								
1	Rehabilitation of existing PRC Havelian u/c Havelian	DRAC 26/03/2007	1.500	-	-	1.500	-	1.500
2	Rehabilitation of existing PRC Salhad u/c Abbottabad	DRAC 26/03/2008	1.600	-	-	1.600	-	1.600
3	Rehabilitation of existing PRC jhangi u/c Abbottabad	DRAC 26/03/2009	0.400	-	-	0.400	-	0.400
4	Construction of 3 Nos. Graingodowns in PRC Havelian u/c Abbottabad	DRAC 26/03/2010	17.739	-	-	7.000	-	7.000
	Total (New)		21.239			10.500		10.500

Annual Work Plan 2007-08

Sector: Livelihood
Sponsoring Org: ERRA

S.No.	Name of Scheme & Location (The Projects are to be implemented in all 9 Union Councils of the EQ affected Areas)	Approved by DRAC/PSC/SSC/ERRA Board/CDWP/ECNEC (Date of Approval & Completion)	Estimated Cost		Estimated Expenditure up to June 2007		Allocation for 2007-08		
			Total	Foreign Aid (EFC)	Total	Foreign Aid (FEC)	Rupee	Foreign Exchange	Total
			Rupees in Million						
A. Ongoing Nil									
B. New (Approved)									
Agriculture									
1	Promotion of High Yielding Cereals, Vegetables and Fruit Orchards	Approved by 6th DRAC on 26-09-2006	57.452	-	-	-	21.887	-	21.887
2	Setting up of Seed Cum Demonstration Farm	do	13.470	-	-	-	6.482	-	6.482
3	Constr./Lining of Water Courses, Water Storage Tanks and PLL (Water Management)	do	44.110	-	-	-	15.140	-	15.140
4	Environmental/Rehabilitation in the Earthquake Affected Areas	do	21.853	-	-	-	7.173	-	7.173
5	Women's Skill Trainings in Fruits and Veg: Preservation In the EQA Areas	do	3.045	-	-	-	1.557	-	1.557
6	Establishment of Agro-Veterinary Services Centres	do	5.000	-	-	-	5.000	-	5.000
7	Training for the Farmers & Field Staff	do	5.000	-	-	-	3.000	-	3.000
8	Restocking of Livestock & Poultry	do	34.630	-	-	-	10.000	-	10.000
9	Strengthening of Livestock Department	do	17.000	-	-	-	8.000	-	8.000
Forestry, Wildlife & Fisheries									
10	Reafforestation/Rehabilitation in the EQA Areas in Galis Forest Divn.	do	45.532	-	-	-	18.141	-	18.141

Rupees in Million

S.No.	Name of Scheme & Location (The Projects are to be implemented in all 9 Union Councils of the EQ affected Areas)	Approved by DRAC/PSC/SSC/ERRA Board/CDWP/ECNEC (Date of Approval & Completion)	Estimated Cost		Estimated Expenditure up to June 2007		Allocation for 2007-08		
			Total	Foreign Aid (EFC)	Total	Foreign Aid (FEC)	Rupee	Foreign Exchange	Total
11	Watershed Activities in EQ Areas	do	99.921	-	-	-	37.336	-	37.336
12	Promotion of Medicinal Plants and Mushroom Cultivation	do	11.503	-	-	-	7.174	-	7.174
13	Promotion/Establishment of Sericulture and Apiculture Activities	do	32.438	-	-	-	16.789	-	16.789
14	Establishment of Wildlife Park	do	58.020	-	-	-	9.884	-	9.884
15	Promotion of Aviculture (Bird Farming)	do	26.140	-	-	-	10.503	-	10.503
16	Establishment of Community Game Reserves	do	50.843	-	-	-	42.343	-	42.343
17	Establishment of Thandiani National Park	do	72.552	-	-	-	12.990	-	12.990
18	Development of Ecotourism in Galiat	do	99.980	-	-	-	22.947	-	22.947
19	Promotion of farm fisheries	do	18.000	-	-	-	7.038	-	7.038
	Industries (Vocational Centres)								
20	Establishment of Vocational Training Centres/Income Generating Programme	do	22.553	-	-	-	10.564	-	10.564
	Total		739.042				273.948		273.948

ANNEX B

UNION COUNCILS OF DISTRICT ABBOTTAABD

As per provincial govt. notification No PEA/1(8)2005 dated 20th June 2005

S.NO	UNION COUNCIL	PATWAR CIRCLE	NAME OF MOUZZIAT	POPULATION
			(HALQA PATWAR)	(1998 CENSUS)
1	DALOLA	DALOLA	Dalola, Dabban, Naroka	18900
2	BOI	BOI	Boi, Bandi Samad, Barbeen, Batangi, Diddal, Nakka, Pal, Rankot, Tori	17001
		SAMBLI DHERI	Sambli Dheri, Bandi Hamza, Bandi Pahar, Chak, Gali Mohri, Phogran	
3	KUKMONG	KUKMONG	Kukmong, Kothiala, Pattan Kalan	10843
4	NAMBAL	NAMBAL	Nambal, Majuhan	14173
5	PATTAN KALAN	P/ KALAN	Pattan Kalan	16116
		SIALKOT	Sialkot, Bandi Saraha, Banota, Chamiali, Khokhriala, Larri	
6	BAKOT	BAKOT	Bakot	23153
		MOOLIA	Moolia, Sangal	
7	BEROTE KALAN	B/KALAN	Berote Kalan, Kahoo Sharqi	26012
		B/KHURD	Berote Khurd, Kahoo Gharbi	
8	PALAK	PALAK	Palak, Arwar, Darwaza, Soorjal	18997
		RIALA	Riala, Kala Ban, Longal, Malkot	
9	NAGRIL BALA	N/BALA	Nagri bala, Akhroota, Makool bala, Tatreela	12911
10	NATHIA GALI	MALACH	Malach, Keri Sarfali, Pasala	16702
		BAGAN	Jhansa, Lassan	
11	NAMLI MAIRA	NAMLI MAIRA	Dhaki Khaiteer, Namli Maira, Noormang, Panghora	11093
12	BAGNOTAR	BAGNOTAR	Bagnotar, Bandi Maira, Chhaan	9352
13	BEERANGALI	B/GALI	Beerangali, Adndarseri, Jhfar	12329
14	SARBANA	SARBANA	Sarbana, Desal, Khun, Seergah, Sadra, Mohar Khurd, Aziz Bang, Sangli, Sawal	11343
15	PHALKOT	PHALKOT	Phalkot, Malsa	9777
16	BAGH	BAGH	Bagh, Jaggian, Kohalian, Kehial	13240
17	KUTHWAL	CHATRI	Chatri, Bandi Mansoor, Gali Banian, Kuthwal, Maira Rehmat Khan, Mohar Kalan	11669
18	BANDA PIR KHAN	BANDI DHUNDAN	Bandi Dhundan, Banda Pir Khan	25385
		TARNAWAI	Tarnawai	
19	BALDHERI	BALDHERI	Baldheri, Gojri, Hal Maira Tarla, Hal Maira Uvla, Jalalpura, More More Kalan, Sajikot, Tannan	14796
20	MIRPUR(50%R)	MIRPUR	Mirpur	18765

S.NO	UNION COUNCIL	PATWAR CIRCLE	NAME OF MOUZZIAT	POPULATION
			(HALQA PATWAR)	(1998 CENSUS)
			Mandroch Khurd	
		N/SHEHR SHAMALI	Nawanshehr Shamali	
		N/SHEHR JANOobi	Nawanshehr Janoobi	
22	DHAMTOUR	DHAMTOUR	Dhamtour, Banda Shohalian, Guldhok	
		NAGAKI	Nagaki, Banda Bazdar, Jaswal, Ukhreela	18493
23	SHEIKHULBANDI(50%R)	S/BANDI	Sheikhulbandi, Qasba A/Abad, Rakh Civil /Military	18193
24	SALHAD(50%R)	SALHAD		
			Salhad, Khokar	21211
25	JHANGI(75%R)	JHANGI	Jhangi, Banda Amlok, Banda Batang, Banda Faizullah, Banda Gasan , Banda Khair Ali Khan, Banda Lamba Banda Noor Ahmad, Banda Phagwarian, Banda Qazi, Banda Sher Khan, Dheri, Dobather	26226
26	PAWA	KAKOT	Kakot, Bandi Matrach, Bazurgal, Chatrhi, Gogarhi, Pando Thana, Garamri, Pasial, Patheri Syedan, Peshail, Sargal, Sherbai, Sial, Talehar, Thathi	
		PAWA	Pawa, Banda Jagian, Kamhar, Bandi Kishna, Laley-De-Bandi, Mochi Kot, Paswal Mian, Richbhen, Sohlan Bala, Sohlan Tarli	18326
27	CHAMHAD	CHAMHAD	Chmhad, Bagh Darah, Beram Gali, Bisala, Chamak Maira, Fateh Bandi, Khani Thathiara, Sarbangala, Shadial	
		KASAKI KALAN	Kasaki Kalan, Kasaki Khurd, Baghati, Bain Gojri, Bain Noora, Banseri, Bhoraj, Botiala, Daroparh, Jattal, Mehal, Thana	17824
28	PIND KARGU KHAN	P-KARGU KHAN	Ping Kargu Khan, Barkot, Haal, Khalora Tarla, Khalora Utlra	
		LAKHALA	Lakhala, Gandah, Kangrora, Khanda Khoo, Pind	
		SERI SHER SHAH	Seri Sher Shah, Bandi Nikra, Bareela, Bacha Kalan, Bacha Khurd, Chahar, Chatha, Tandhara, Kanger Bala, Pohar, Rata	17755
29	KUTHIALA	KUTHIALA	Kuthiala, Gheley, Gup, Jaghan Mar, Mukhdabi, Nallah, Paswal, Salyut, Sobra, Thali, Todoo	11647
30	JARRAL	JARRAL	Jarral, Bacha Sani, Bhajwal, Gul Bandi, Jabbi, Khutiala, Kotnali, Nakhey	6945
31	SHERWAN	SHERWAN	Sherwan Kalan, Sherwan Khurd, Bamochi, Bhateel Kalar, Khaitar, Kumhar(Amir Abad), Shaheedabad, Thorey	
		CHAMHATI	Chamhati, Beri, Chakar, Bain, Chorgran, Juna, Kamila, Kangar Pin, Khalabat, Kharperh, Thati Ahmad Khan	15307
32	MALIKPURA (URBAN)	CIRCLE-I	B-1 Shimla Hill, B-2 Chari & Chandni Chowk B-3 Moh: Sher Mohammad B-4 Moh: Chita pul, B-5 Moh: Jail	
		CIRCLE-II	B-1 Moh: Dhakki, B-2 Moh: Nazami Darul Khair, B-3 Moh: Maira Darul Khair B-4 Chitta Pul, Madni Mohallah B-5 Chitta Pul New Tehsil, Circular Road	16530

S.NO	UNION COUNCIL	PATWAR CIRCLE	NAME OF MOUZZIAT	POPULATION
			(HALQA PATWAR)	(1998 CENSUS)
			Kanshirpura	
33	CENTRAL ABBOTTABAD	CIRCLE-II	B-6 Bus Stand, Moh: Sapan, Sabzi Mandi	15096
			B-1 Moh: Forest, Moh: Sikandar, Ahata Kotchary, Moh: Rais Khan,	
			B-2 Moh: Noor-Ud-Din, Ahata Mian, Diggi Mohallah	
			B-3 Moh: Thakar, Gardwara, Jalian Moh: , Wakeel Moh: , Sirsyed, Moh: Saiban	
		CIRCLE-III	B-4 Kadim Board Office, Aram Bagh	
			B-1 Kunj Jadeed	
			B-2 Kunj Qadeem	
			B-3 Dak Buglow, Kunj Ground, Qabli Mosque, Comp: School	
		CIRCLE-IV	B-7 Chari Moh: New Abadi, Kund Jadeed	
			B-4 Moh: Mag: , Moh: Asif Shah, Abu-Zar Street	
	B-5 Saddiqua Mohallah			
CIRCLE-IV	B-6 Moh: Farooq Azam, Moh: Usmanian			
	B-1 Karbala, Lower Kehal			
	B-2 Upper Kehal			
	B-3 Khola Kehal, Moh: Kassi, Moh: Piran			
	B-4 Khola Kehal, Moh: Sardar Sadiq,			
	B-5 R.O.Office, Makki Mohallah			
34	KEHAL (URBAN)	CIRCLE-V	B-6 Moh: Uchari, Arambagh	
35	NAWANSHEHR (URBAN) Tehsil Havelian	CIRCLE 1 to 3	Moh: Muhammad Zai, Moh: Nia, Ilyasi, Moh: Sohaib Zai, Moh: Imran Zai, Joggan, Moh: Mosa Zai, Kund, Moh: Khalil Zai, Dhodial	19371
1	GHARI PHULGRAN	GHARI PHULGRAN	Ghari Phulgran, Hamara, Ghora Bazgran, Mannan, Kiala	20433
		RAJOYA	Rajoya, Thith Ochar	
2	BANDI ATTAI KHAN	BANDI ATTAI KHAN	Bandi Attai Khan, Barseen, Batolni, Kotla, Manhat, Phullan Wali, Pipal, Salwala, Sureela	13853
3	JHANGRA (25%U)	JHANGRA	Jhangra, Chamba, Kalu Maira, Nowshera	23629
		HAVELIAN	Havelian (Rural), Darooni Maira, Mala, Sultanpur, Wazeera	
4	MAJOHAN	MAJOHAN	Majohan, Garba, Masah Gojri, Masah Syedan, Mera Tarla	15528
		RIALA	Chamnaka, Chandu Maira, Dhanak, Hajia, Karach, Mohari Sanwala, Tarmuchian	
5	LANGRIAL	LANGRIAL	Langrial, Dabran, Karhaki, Gali Batgran	12451
		DANNA NOORAL	Danna Nooral, Baseera, Cholata, Faqir Muhammad, Lassan, Manjia	
6	NARA	NARA	Nara, Gohra, Maira Utla, Mohri-Bad-Bhen	15690
		SATORA	Satora, Dakhan, Ghangah, Kanger Hoter, Kehan Mari	
7	DEWAL MANAL	SAJIKOT	Sajikot, Ghehr, Dewal Manal, Makool Tarli, Nagri Tarli	10899
8	GOREENI	GOREENI	Goreeni, Kotal, Palasi	15516
		DANNAH	Danah, Bagla, Bajarian, Banwari, Suma Garhaga	
9	PHALLAH	GHAMBEER	Phallah, Ghambeer, Ateran, Dheri Rakhala, Gali Kashmir, Ropar	18996

S.NO	UNION COUNCIL	PATWAR CIRCLE	NAME OF MOUZZIAT	POPULATION
			(HALQA PATWAR)	(1998 CENSUS)
		RAHI	Rahi, Battal Kund, Bhajoora, Charbat, Dhakhan, Paisar, Maira, Sher Pur	
10	LORA	LORA	Lora, Dheri Kiala, Ghari Ghora, Narhoter, Noorpur, Seri Thath Karam Shah	11733
11	LANGRA	LANGRA	Langra, Banda Sahib Khan, Lari	16705
		HAVEILAN (URBAN)	Moh: Loharan, Moh: Bega, Street Rozi Shah, National Bank, Lunda Bazar, Post Office Road, Moh: Upper Bega, Forest Check Post, Moh: Kashmarian, Street Dr. Farid, Street Naseem Sarhadi, Moh: Tanki, Moh: Tall, Moh: Tamber Market, Moh: Qabli, Moh: Mehboob Abad, Moh: Al-e-Hadees, Moh: Behram Khan, Kathra, Mian Feroz Shah, Moh: Markazi Jamia Masjid, Street Ajab Khan Zaib, St: Iqbal Market, Moh: Toti Khan, Moh: Roshan Din, Moh: Qasab, Moh: Zaman Shah, Gali Chan Pir, Gali Muhammad Din, Moh: Azam Khan, Abadi Tel: Exchange etc	
12	HAVELIAN (URBAN)	KOKAL	Kokal, Gajjal, Jandaka	20566
13	SEER GHARBI	SEER GHARBI	Seer Gharbi, Bashbher, Malmola	8895
14	TAJWAL	TAJWAL	Tajwal, Nowshera, Pirkot, Topla	9766
15	NAGRI TOTIAL	NAGRI TOTIAL	Nagri Totial	9358
16	SEER SHARQI BHATTIAN	SEER SHARQI	Seer Sharqi, Bhattian, Taror	8274

Annex-C
Contacts of key Governmental and
Non- Governmental Organization
District Abbottabad

Office	Phone	Fax	Mobile
District Government Abbottabad			
Sardar Haider Zaman Nazim Aala	9310209	9310391	0300-5636291
Mr Arshad majeed	9310200-01	9310202	
EDO Agriculture	383026	380325-381357	
EDO Agriculture Ishtaiq Abbasi	380302-6	DO Agriculture Younis sb	380325
EDO Colleges GPGC # 1 Atd Pro. Riaz-ul-Islam	9310126	9310126	
EDO Education Bashir Hussain Shah	9310102	9310102	
EDO F&P Ishtiaq Qureshi	9310333- 35	Res.9310336 - 9310202	
EDO Health Dr. Javid	9310191-2	9310196	0300-5641455
EDO Industries	382211	383444	
EDO Schools & Literacy Bashir Shah sb	9310102	9310102	0300-5924956
EDO Social Welfare Aurang Zeb Abbasi	9310359		0304-5049444
EDO W&S	9310258	9310202	
D EDO Health Dr. Sardar Muhammad		0333-5038289	0345-9598998
Sardar Nawaz ADO Education	9310102	9310102	0300-8366328
Assitant Coordination Officer	9310203	9310202	
Assistant Director Information	9310165		
Abbottabad Developmetn Authority	9310241		0345-9541104
Sub. Registrar Tehsil atd			03004-5003090
Bait-ul-mall office	9310262		
BISE Abbottabad	392013		
Cant Board Executive	9310181		0345-9522663
Conservator Forest	9310323		0300-5621164
Deputy Director NHA Atd	383113- 381164- 382117	384627	
D Dir. Public Health	382176	9310242	

Office	Phone	Fax	Mobile
District Government Abbottabad			
D Dir. W & S Ijaz Ansari	9310242		0300-5631727
D DRO			0300-5733755
D E PTCL Zahoor ab	380455	380444	
DFO Galiyat	9310306		
DFO Wild Life Ayubia National Prk	9310340		
DFO Water Shed	9310305		
DFO WaterShed	9310305-303-233		
DFO WILDLIFE	9310323		
Dir. Audit ERRRA Jinnah Abad Office	380456		
Dir. Finance Bashir Ayub Medical Complex			0301-8175850
Dir. Maintenance AMC Atd	382348		
Dist. Food Controller Munir Shah	9310326		
Dist. Information Officer	9310165		
Distrcit and Session Judge	9310051		
Distrcit Planning Offcier	9310337		
District Account Officer	9310219-351	9310352	
District Council Atd	9310250		
DO Social Welfare	380047		
DOR Abbottabad	9310207		0333-9116063
Engr. Shafqat sb Cantt. Board	9310180		0333-5216543
Excise & Taxstion Officer	9310308		
Frontier House	9310212		
Frontier House + Governer House	9310212		
GDA Abbottabad	9310241		
GM PTCL		337728	
Grid Station Mandian	380742		
Gul Hameed Khan Sui Gas	9310069		
Gul Hameed Sales Officer SNGPL	9310074		
Gul Muhammad Conservator Forest	9310304	9310233	
Gul Sb SNGPL			0306-5047797
Gul Shahzad Irrigation			0345-9552018
Hayat Ali Shah District & Session Judge	9310051		
HRD Officer Habib Ullah Jadoon	9310200-01		
Information Officer (Mubashir/Arif)	9310165		
INOR Cancer Hospital Sajid	385461-62		
M Naseer RM SNGPL	9310076		
NADRA ERRRA IN DCO Office	335356		

Office	Phone	Fax	Mobile
District Government Abbottabad			
NPB APS Branch	380537		0345-9180834
Press Club Atd	337797		
Rafi-ud-Deen CNW..W & S	9310344	9310343	0333-5039210
Raja Ashraf C & W PERRA Raffi-udin Office			0333-5055203
Range Officer WildLife Khurshid Sb			0304-5033257
S E PESCO ATD	9310404	9310405	
Sajjad Shah PICIC Bank			0304-5003646
Sanitaion Officer Cant. Board	9310180		
Sarfraz sb DSP Headquarter Atd	9310034		
Sec. District Council/ Naib Nazim	9310106		
Shakeel Ahmed Exchange Mandian			0300-9119634
SNGPL	9310070		
Station Commandar	9310423		
Sultan Haroon PTCL	380770		0300-9114755
Tariq sb Sports Officer	9310224		0345-9556668
Tourism Office	9310168		
Wapda Grid station	9310089		
Wapda Complaint office	384078		
XEN Irrigation Mazhar sb	9310246-47		0300-9155450
XEN Parviz Khan Sb	9310081		
XEN Shabir sb Kaghan Colony XEN Operaton	390805		0301-8583170
Zahida Yasmeen Social Welfare Officer			0304-5010239
Social Welfare Officer Munir sb			0304-5010483
Tehsil Nazim	9310373	9310202	
Tehsil Nazim Havalian Mehmood Hayat Abbasi	812810		0301-5164207
TMA Abbottabad Arbab Jamil Sb	9310399	330931	0301-8704500
TMA Havelian	810825	810878	0300-5630595
Engr.Zahid sb TMA Office Atd.	9310248		
District Reconstruction Unit Abbottabad			
Nazar Hussain Shah Prog.Manager	380386		0300-5998537
Faisal Azam M&E Section	0992380056		03219802248
NGOs/Ios			
Abid Gil UNICEF	383449		0333-4264166
Al Haji Bha UNICEF	382935		0300-5018785

Office	Phone	Fax	Mobile
District Government Abbottabad			
Aniq sb DOSTI	0997-302734		0333-5058092
Anwar UI haq PM UNDP	381239		0301-8550779
Arthur CARITAS	0997-440394		0301-5194054 03219670716
BEST	3335043720		
Bilal sb DOSTI	0997-302734		0345-9174813
CESSD	337511		
DONA PM World Vision	440356		
DOSTI	385240		
Dr. Builal UNICEF			0333-9292920
EEF	331546		
International Relief	305152		
Miss Shoko Noda UNDP	051-2800133 ext 2818	2800031-34	0300-8568770
Miss Tanver Ocha	3018166234		
Mukhtair Javid Sungi			0304-5006043
Mumtaz Tanoli Umar Asghar Khan	381529		0304-5032298
NCHD	383518		
PERA CARITAS			0302-5473423
Sky Inn	385199		
SMU Unicef	331488		
SRSP	343739/334126	334109	0300-5613264
SUNGI BOI FIELD OFFICE	845011- 845397		
SUNGI Samina Khan Exective Dir.	334750- 336957- 333414	337126	
Surkhab sb DOSTI	0997-302734		0304-5011180
UMAR ASGHAR FOUNDATION	385699	3834180	
UNDP Atd Waheed Anwar	381239-40		0301-8542472
UNDP Islamabad			051-2652840
UNICEF	383449- 382935- 383267		
Waheed Ocha	0300-5883038		
Wajid Accounts International Relief			0300-5874705
Dr.Javid Ali Khawaja (CARITAS)	0997-440394	0300-3037242	
Hamayat Shah Shell Pakistan			0300-5925699
Zia-ud-din Shell Pakistan			0300-8116490

District Profile Development Team

Earthquake Reconstruction and Rehabilitation Authority ERRA	
Lt. Gen Nadeem Ahmed	Deputy Chairman ERRA
Khadija Khan	Chief Knowledge Management
Abdul Akbar Shah	Research Officer
Hina Tabassum Cheema	Research Officer
Taniya Shah	Research Officer
Waheed Ahmed	Research Officer
Ishtiaq Ahmed Sandhu	GIS Specialist
Zahid Malik	Data Analyst
State Earthquake Reconstruction and Rehabilitation Agency SERRA (AJK)	
Dr. Syed Asif Hussain	Director General – SERRA
Dr. Syed Ghulam Haider Kazmi	Regional Planning Expert
Malik M. Sadiq	District Planning Expert DRU, Bagh
Muhammad Khan Ranjha	District Planning Expert DRU, Rawalakot
Qaiser Alam Khan	District Planning Expert DRU, Muzaffarabad
Mr. Habib Ullah Khan	Director General - PERRA
Provincial Earthquake Reconstruction and Rehabilitation Agency PERRA (NWFP)	
Musaddiq A. Khan	Provincial Planning Expert
Mohammad Ashraf	District Planning Expert DRU, Mansehra
Abdul-Haleem & Faisal Azam	M&E Officers DRU, Abbottabad
Ayaz Gul	District Planning Expert DRU, Battagram
Noor-ul-Hadi	M&E Officer DRU, Kohistan
S. Bahadur Qutoshi	Senior Program Coordinator DRU, Shangla

**Other Publications
of
Earthquake Reconstruction and Rehabilitation Authority (ERRA)**

Published

Annual Review 2005-06	District Profiles
1. Rebuild Revive With Dignity & Hope	1. Muzaffarabad/Neelum
ERRA's Sector Wise Strategies	2. Rawalakot/Poonch
1. Rural Housing	3. Bagh
2. Urban Housing & Town Planning	4. Abbottabad
3. Health	5. Mansehera
4. Education	6. Battagram
5. Governance	7. Shangla
6. Water Supply & Sanitation	8. Kohistan
7. Transport	ERRA Brochure
8. Environment	ERRA Newsletter (Monthly)
9. Livelihood	
10. Power	
11. Social Protection	
12. Telecommunication	
Soon to be Published	
1. Annual Review 2006-07	
2. Case Studies	
i- Housing	ii- Livelihood Cash Grants
iii- Social Sector (Health & Education)	iv- Handling of IDPs

Knowledge Management Cell (KMC)
 Earthquake Reconstruction & Rehabilitation Authority (ERRA)
 Prime Minister's Secretariat (Public) Ph: +92-51-9030-967
 Islamabad Fax: +92-51-9030-949 URL: www.erra.gov.pk